

# 97th Annual Meeting

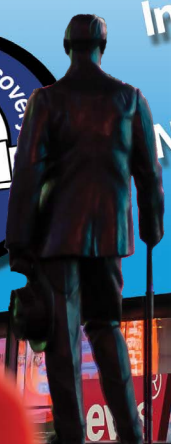


**FEBRUARY 3-5, 2025**  
New York's Largest Water Quality  
Technical Conference & Exhibition

**Register**



Inside: Technical Sessions  
Exhibition Hall  
Networking Opportunities  
Receptions



SEPHORA

SEPHORA







# KOESTER®

KNOWLEDGEABLE. CARING. LOYAL.

Upstate New York

3101 Seneca Turnpike  
Canastota, NY 13032  
Phone: (315) 697-3800  
Fax: (315) 697-3888

NYC, Long Island, New Jersey

170 Kinnelon Road  
Kinnelon, NJ 07405  
Phone: (973) 492-0400  
Fax: (973) 492-9581

sales@koesterassociates.com  
service@koesterassociates.com  
parts@koesterassociates.com

[www.koesterassociates.com](http://www.koesterassociates.com)



## Our Handshake Is Our Commitment To You.

### HEADWORKS

- Grit Removal
- Screening

### CLARIFICATION

### BIOLOGICAL

- Activated Sludge
- RBCs
- Trickling Filter
- MABR
- MBBR
- MBR
- IFAS

### TERTIARY TREATMENT

- BNR
- Disc Filters
- Microfiltration
- Rapid Sand Filtration
- Reverse Osmosis
- Ultrafiltration

### DISINFECTION

- UV
- Chlorination
- Chemical Feed
- Ozone

### PUMPS AND PUMPING SYSTEMS

### ODOR CONTROL

### CONTROLS AND INTEGRATION

### SERVICE

- Asset Management
- Retrofits



Supplying Equipment, Solutions and Service for Water & Wastewater





**97<sup>TH</sup> NYWEA  
ANNUAL MEETING  
FEBRUARY 3-5, 2025  
NEW YORK CITY  
MARRIOTT MARQUIS HOTEL**

**PROGRAM SUBJECT  
TO CHANGE**



**SCAN FOR MOST  
UP-TO-DATE  
VERSION**

**THANK YOU  
FOR ATTENDING!**

# **2025 ANNUAL MEETING TABLE OF CONTENTS**

Schedule At-A-Glance **4-5**

Our Sponsors **6**

Committee Meetings **7**

Opening Session **11**

Monday Technical Sessions **11-25**

Tuesday Technical Sessions **26-46**

Wednesday Technical Sessions **47-56**

Annual Meeting Maps **58-61**

Long Standing Members **62**

Advertiser Index **62**

Board & Committee Leadership **63**

# 2025 ANNUAL MEETING SCHEDULE-AT-A-GLANCE

## SUNDAY, FEBRUARY 2

**Registration** 3:00–5:00 PM  
Exhibit Hall (5th floor)

## MONDAY, FEBRUARY 3

**Registration** 8:30 AM–4:00 PM  
Exhibit Hall (5th Floor)

**Opening Session** 8:30 AM  
Marquis Ballroom (9th Floor)

**Exhibition Opens** 10:30 AM  
Exhibit Hall (5th Floor)

**Ribbon Cutting** 10:45 AM  
Exhibit Hall (5th Floor)

**Morning Technical Sessions:** 11:00 AM-12:00 PM  
SESSION 1: Design Build  
Odets (4th Floor)  
SESSION 2: Environmental Restoration  
Ziegfeld (4th Floor)  
SESSION 3: Internet of Things  
Cantor/Jolson (9th Floor)  
SESSION 4: Leadership Panel  
Marquis C (9th)

**New Member Lunch** 12:00-1:30 PM  
Marquis C (9th Floor)

**Lunch on Own** 12:00-1:30 PM  
Food Cart Available in Exhibit Hall (5th Floor)

**Afternoon Technical Sessions** 1:30-4 :30 PM  
SESSION 5: Collection Systems 1  
Marquis A (9th Floor)  
SESSION 6: Affordability and Funding  
Marquis B (9th Floor)  
SESSION 7: Optimizing Biosolids Management  
Marquis C (9th Floor)

SESSION 8: Energy Conservation  
Odets (4th Floor)

SESSION 9: Plant Hydraulics  
Wilder (4th Floor)

SESSION 10: Research & Innovation at the Plant  
Ziegfeld (4th Floor)

**Coffee Break** 2:30-3:30 PM  
Exhibit Hall (5th Floor)

**InFLOW Panel Discussion** 2:30-3:30 PM  
Marquis C (9th Floor)

**Womens' Networking Event** 2:30-3:30 PM  
Wilder (4th Floor)

**Exhibitor Reception** 4:00-6:00 PM  
Exhibit Hall (5th Floor)

## TUESDAY, FEBRUARY 4

**Registration** 8:30 AM–4:00 PM  
Exhibit Hall (5th Floor)

**Exhibition Opens** 8:30 AM  
Exhibit Hall (5th Floor)

**Morning Technical Sessions** 9:00 AM-12:00 PM  
SESSION 11: Operator's Forum  
Marquis C (9th Floor)  
SESSION 12: Professional Development &  
Leadership (Young Professional Session)  
Marquis A&B (9th Floor)  
SESSION 13: Asset Management  
Cantor/Jolson (9th Floor)  
SESSION 14: The Circular Water Economy  
Odets (4th Floor)  
SESSION 15: Stormwater: Doing More  
with Less & Equitable Design  
Wilder (4th Floor)  
SESSION 16: Nutrient Removal  
Ziegfeld (4th Floor)  
SESSION 17: Emerging Contaminant  
O'Neill (4th Floor)



SESSION 18: The Drier the Better:  
Case Studies on Biosolids Dryers  
Hudson (7th Floor)

SESSION 19: Public Education & Outreach  
Empire (7th Floor)

**Coffee Break** 10:00-11:00 AM  
Exhibit Hall (5th Floor)

**Student Chapter Activities** 10:00 AM-4:30 PM  
Chelsea/Gotham (7th Floor)

**Lunch (Included in Fee)** 12:00-1:30 PM  
Bagged Lunch in Exhibit Hall (5th Floor)

**Afternoon Technical Sessions** 1:30 PM-4:30 PM  
SESSION 20: Diversity in Water: Equity,  
Trends, and Collaborative Partnerships  
Marquis C (9th Floor)

SESSION 21: Design Build 2  
Odets (4th Floor)

SESSION 22: CSO/SSO 1  
Cantor/Jolson (9th Floor)

SESSION 23: Plant Upgrades & Disinfection  
Marquis A&B (9th Floor)

SESSION 24: Utility Management  
Wilder (4th Floor)

SESSION 25: Resiliency  
Ziegfeld (4th Floor)

SESSION 26: Pre-Treatment  
O'Neill (4th Floor)

SESSION 27: Implementing Innovation  
Hudson (7th Floor)

SESSION 28: University Forum  
Chelsea/Gotham (7th Floor)

**Coffee Break** 2:30-3:30 PM  
Exhibit Hall (5th Floor)

**Exhibit Area Closes** 4:15 PM

**YP Reception** 4:30-6:30 PM  
*ONLY 35 & UNDER NEED TO REGISTER.  
PLEASE FOLLOW THE APPROPRIATE SIGN.*  
Upper Terrace (9th floor)

## WEDNESDAY, FEBRUARY 5

**Registration** 8:30 AM-1:00 PM  
4th Floor

**Morning Technical Sessions** 9:00 AM-12:00 PM

SESSION 29: Collection Systems 2  
Cantor/Jolson (9th Floor)

SESSION 30: Research & Innovation  
in the Collection System  
Odets (4th Floor)

SESSION 31: Managing Your Biosolids:  
Class A, PFAS, and More  
Wilder (4th Floor)

SESSION 32: Water Reuse and Pumping  
Ziegfeld (4th Floor)

SESSION 33: Regulatory  
O'Neill (4th Floor)

**Coffee Break** 10:00-11:00 AM  
4th and 9th Floors

**NEW! Lunch (Included in Fee)** 12:00-1:30 PM  
Bagged Lunch 4th Floor

**Afternoon Technical Sessions** 1:30 PM-4:30 PM

SESSION 34: Resource Recovery  
Cantor/Jolson (9th Floor)

SESSION 35: CSO/SSO 2  
Odets (4th Floor)

SESSION 36: NYC Stormwater  
Wilder (4th Floor)

SESSION 37: Climate Impact & Sustainability  
Ziegfeld (4th Floor)

SESSION 38: PFAS  
O'Neill (4th Floor)

**Coffee Break** 2:30-3:30 PM

**Meeting Adjourns** 4:30 PM

# 2025 ANNUAL MEETING

## OUR SPONSORS

NYWEA extends a heartfelt thanks to our sponsors for their generosity and support.





# 2025 ANNUAL MEETING COMMITTEE MEETINGS

## Sunday, February 2, 2025

12:00 - 3:30 PM Board of Directors, *Wilder (4th Floor)*

## Monday, February 3, 2025

12:00 - 1:30 PM Governance Council Meeting, *Gilbert (4th Floor)*  
12:00 - 1:30 PM NYC Metro Board Meeting, *Ziegfeld (4th Floor)*  
12:00 - 1:30 PM Industrial/Pre-Treatment Committee Meeting, *Cantor/Jolson (9th Floor)*  
2:30 - 3:30 PM Collection Systems Committee Meeting, *Marquis A (9th Floor)*  
2:30 - 3:30 PM Public Education Committee Meeting, *Odets (4th Floor)*

## Tuesday, February 4, 2025

10:00 - 11:00 AM Awards Committee Meeting, *Marquis C (9th Floor)*  
10:00 - 11:00 AM Sustainability Committee Meeting, *Odets (4th Floor)*  
10:00 - 11:00 AM Government Affairs Committee Meeting, *Wilder (4th Floor)*  
10:00 - 11:00 AM Student Officer / Advisor Meeting, *Chelsea / Gotham (7th Floor)*  
12:00 - 1:30 PM Asset Management Committee Meeting, *Cantor/Jolson (9th Floor)*  
12:00 - 1:30 PM Certification Committee, *Odets (4th Floor)*  
2:30 - 3:30 PM Program Committee, *Odets (4th Floor)*  
2:30 - 3:30 PM Environmental Science, *Wilder (4th Floor)*  
2:30 - 3:30 PM Utility Executives, *Ziegfeld (4th Floor)*  
2:30 - 3:30 PM Residual and Biosolids Committee, *O'Neill (4th Floor)*

## Wednesday, February 5, 2025

10:00 - 11:00 AM Scholarship Committee, *Cantor/Jolson (9th)*

## Managing Today's Environment for a Better Tomorrow

Sustainable, cost-effective engineering and environmental solutions have been D&B's focus since our inception.

This includes projects like the **Carlls River Sewering Project** for the county of Suffolk, which received three prestigious awards in 2024: ACEC New York Engineering Excellence Awards - **Diamond Award**; ACEC National Engineering Excellence Awards - **Honor Award**; and LIBN's Real Estate, Architecture & Engineering Awards - **Top Infrastructure Project**.

Wastewater or water supply, environmental remediation, architecture or civil engineering, D&B lives by an unwavering commitment to total customer satisfaction.



D&B Engineers and Architects  
is a proud supporter of  
NYWEA since 1965



ACEC ENGINEERING  
EXCELLENCE AWARDS



**db** D&B ENGINEERS  
AND ARCHITECTS

516-364-9890 | DB-ENG.COM  
Facing Challenges. Providing Solutions.

WOODBURY, NY • WHITE PLAINS, NY • ISLANDIA, NY • EAST SYRACUSE, NY • ALBANY, NY • SOMERSET, NJ • TREVOSE, PA



# NEW YORK COVERED TOP TO BOTTOM

From Niagra Falls to Montauk Point, Fleet offers industry-leading water/wastewater treatment equipment and stands behind everything we sell. Whether it's pumps, process equipment, controls, filtration, or water recovery, we provide trusted end-to-end solutions tailored to your needs.

**We Have You Covered.**

Pumping Systems



Pumps



Controls



Process Equipment



**FLEET™**

[www.gafleet.com](http://www.gafleet.com)

DESIGN THROUGH INSTALLATION  
AND CONTINUED SERVICE.





**Water, Wastewater,  
and Industrial  
Processing Equipment  
& Service Solutions.**

# **DHA Has a New Location on the NYWEA Floor**



**Albin Pump - CST - Gabriel Novac & Associates - Pulsafeeder  
Rodney Hunt - SmartCover - Teledyne ISCO - VAHN-TECH - WASTECORP Pumps**

**Booth Numbers**

**26 - 36 - 37 - 38 - 39 - 46 - 47 - 48 - 49**

**[www.daveheinerassoc.com](http://www.daveheinerassoc.com)**

# 2025 ANNUAL MEETING PRESIDENT'S WELCOME



**Welcome to the 97th Annual Meeting!** This year we have another strong technical program and I hope you take advantage of all that we have to offer. It is my pleasure to spend the next few days with you and I look forward to catching up with my NYWEA friends.

Cheers!

**Lisa Derrigan**, NYWEA President



# 2025 ANNUAL MEETING OPENING & TECHNICAL SESSIONS

## Monday, February 3rd, 2025

### **OPENING SESSION – Marquis Ballroom (9th Floor)**

- 8:30 AM: Coffee and Breakfast Sandwiches
- 8:45 AM: Khris Dodson, NYWEA Executive Director
- 8:50 AM: Lisa Derrigan, NYWEA President
- 9:10 AM: Lucy Grassano Scholarship Awardees
- 9:15 AM: Walt Walker: InFlow Scholars
- 9:25 AM: Keynote Speaker: Radhika Fox
- 10:30 AM: Adjourn

### **SESSION 1: Design Build – Odets (4th Floor)**

MODERATORS: Scott Davis, Carollo; Gregg Shaw, Stantec

*Wastewater: 1.0 RTC      Engineer: 1.0 PDH      DBIA Credits: 1 Hour*

#### **11:00 AM: Lessons Learned from Serving as an Owner's Advisor for Twenty Years**

The use of collaborative delivery can help owners address project challenges. Utilizing an Owner's Advisor (OA) can assist communities in delivery of their projects. With a focus on aligning project goals with the owner's vision and strategic risk management, the OA assists in strategic planning, team selection, risk management, quality control, and conflict resolution. Lessons learned for collaborative delivery projects will be presented based on having served as an OA for the past two decades.

**Brian Balchunas, HDR ([brian.balchunas@hdrinc.com](mailto:brian.balchunas@hdrinc.com))**

#### **11:30 AM: Alternative Delivery Effectiveness for Small Infrastructure Projects**

Floyd Bennett Field (FBF) in Brooklyn, New York, a former municipal airport and now part of the Gateway National Recreation Area, is undergoing a wastewater collection system rehabilitation. The project, using a Design-Build approach, focuses on repairing 10,000 linear feet of sewer lines and upgrading pump stations. Close collaboration between the National Park Service, engineers, and contractors ensured timely, cost-effective solutions, minimizing redesigns and change orders for a small infrastructure project.

**Jake Oldenburger, Tetra Tech ([jake.oldenburger@tetratech.com](mailto:jake.oldenburger@tetratech.com)), Max Hernandez, Tetra Tech ([max.hernandez@tetratech.com](mailto:max.hernandez@tetratech.com))**

**MODERATORS WILL SCAN THE QR CODE ON YOUR BADGE FOR CONTACT HOURS**

**SESSION 2: Environmental Restoration – Ziegfeld (4th Floor)**

MODERATORS: Jacob Kocic, GHD; Briana Fitzgerald, MJ Engineering

Wastewater: 1.0 RTC      Engineer: 1.0 PDH

11:00 AM: **Wetlands: How to Construct High Value Saturated Habitats--The Do's and Don'ts**

Many constructed wetlands would be considered failures by most astute wetland scientists. Volume, seasonality and consistency of water can contribute singly or combination the major problem. Lack of understanding watershed hydrology, hydrologic zones, wetland plant selection and wetland hydrogeomorphology are also major concerns. If designed properly a constructed wetland can function well, provide habitat and contribute significantly to the ecosystem. This presentation will enhance understanding of wetland science and provide tips on design.

Jane Rowan, Mott MacDonald (jane.rowan@mottmac.com)

11:30 AM: **Bringing the Hudson Raritan Estuary Back to Life**

After years of neglect, the estuaries surrounding the NYC metropolitan region have seen significant degradation. To reverse some of these impacts, Congress charged the US Army Corps of Engineers (USACE) with developing a comprehensive and prioritized solution to restore ecological function, structure, and dynamic processes to the Estuary. The Hudson Raritan Estuary (HRE) Ecosystem Restoration Projects result from this effort.

Lisa Baron, U.S. Army Corps of Engineers - New York District (Lisa.A.Baron@usace.army.mil)

**SESSION 3: Internet of Things – Cantor/Jolson (9th Floor)**

MODERATORS: Toby Singer, Port Authority; Erin Moore, Tighe and Bond

Water: 1.0      Wastewater: 1.0 RTC      Engineer: 1.0 PDH

11:00 AM: **Protect This House: Addressing Cybersecurity Vulnerabilities**

Water and wastewater utilities are seeing a continued escalation in malicious cyber-attack attempts. These assaults pose a severe threat, capable of disabling wastewater conveyance, treatment, and reclaimed water production, leading to catastrophic environmental and public health consequences. The Environmental Protection Agency (EPA) has urged utilities across the US to take added security precautions following the attacks. This presentation identifies steps utilities are taking (with utility names omitted) to assess, find, and mitigate cyber vulnerabilities.

David Espy, Tetra Tech (David.espy@tetratech.com)

11:30 AM: **Understanding the Cybersecurity Threat Landscape for Water and Wastewater Systems**

This session will review the cybersecurity threat landscape and specific challenges faced by the water and wastewater utilities including common findings identified during assessments and a possible road map to achieve cybersecurity maturity through smart investments and industry supported mitigation methods.

Brandon Erndt, HDR (brandon.erndt@hdrinc.com)

**MODERATORS WILL SCAN THE QR CODE ON YOUR BADGE FOR CONTACT HOURS**



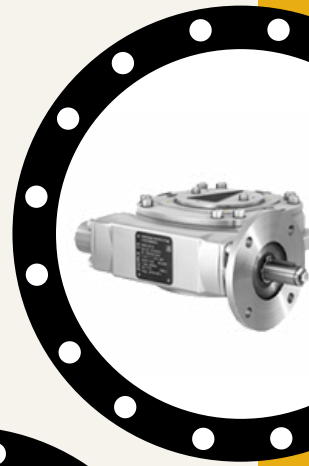


# RARITAN VALVE & AUTOMATION

A RARITAN GROUP COMPANY

Valves • Actuators • Controls • Service

## RESOURCEFUL. RELIABLE. RESPONSIVE.



### EXCLUSIVE REPRESENTATIVE

 RARITANVALVE.COM

☎ 732-572-2555



**SESSION 4: Leadership Panel – Marquis C (9th Floor)**

MODERATORS: Rick Warner, Jacobs

Water: 1.0

Wastewater: 1.0 RTC

Engineer: 0.0 PDH

(1HR) 11:00 AM: **Leading in the Age of “Be Ready for Anything, Anytime”**

Water leaders will highlight lessons learned from leading transformative change, practicing adaptive management strategies, forming partnerships, while remaining personally resilient in times of unprecedented disruption. There is no shortage of technical, social, and financial challenges shaping how communities must be ready for anything, anytime. Wherever you are on your leadership journey, join us to learn, share, and find inspiration from personal stories and authentic insights from public agency and private sector water leaders.

**Rick Warner, Jacobs (rick.warner@jacobs.com)**

*Panelists:*

Shannon Harty, Onondaga County; Angela Litcata, New York City Department of Environmental Protection;  
Shannon Spurlock, Pacific Institute

**LUNCH BREAK—FOOD CART AVAILABLE IN EXHIBIT HALL (SELF PAY)**

12:00 – 1:30 PM

Do you have capital improvement projects you need to get done and don't know where to start?

**WENDEL IS  
HERE TO HELP.**



**Brian Sibiga, PE**  
BSibiga@wendelcompanies.com



**Zach Weaver, PE**  
ZWeaver@wendelcompanies.com



**877.293.6335**  
wendelcompanies.com

architecture | engineering | energy efficiency | construction management







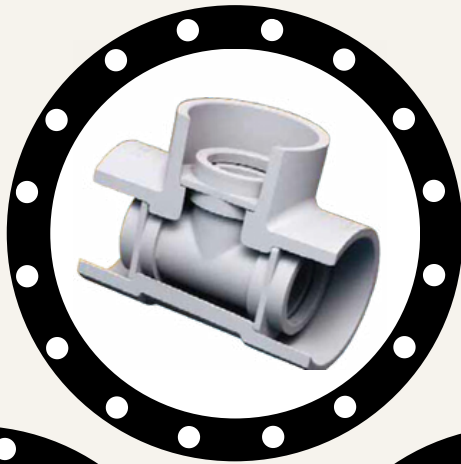
# RARITAN

SINCE 1943

GROUP

Pipe • Valves • Fittings • Automation

RESOURCEFUL. RELIABLE.  
RESPONSIVE.



EXPERTS IN CRITICAL FLUID HANDLING SOLUTIONS

 RARITANGROUP.COM  
☎ 732-985-5000



RARITAN VALVE  
& AUTOMATION



**RARITAN**  
PIPE & SUPPLY CO





AECOM

Water, make your  
**mark.**

We're positioned for significant growth and are seeking motivated individuals at all levels to be part of this exciting journey with us!



Find your **H<sub>2</sub>O**pportunity

How do you want to make your mark?  
Join our team today to take part  
in career-defining projects!

 [aecom.com/h2opportunity](https://aecom.com/h2opportunity)



WRIGHT-PIERCE 

888.621.8156  
wright-pierce.com

# Engineering a better environment

Sustainable water infrastructure that  
drives community prosperity

 Woodard & Curran

## > Experts from concept to operations

Combining innovative thinking and practical solutions  
to deliver long-term value.

- Drinking Water
- Funding & Finance
- SCADA
- Contract Operations & Maintenance
- Wastewater & Reuse
- Community Development
- Stormwater
- Flood Mitigation/Resiliency

woodardcurran.com

 **Vaughan**<sup>®</sup>  
Unmatched Reliability



Since 1960, Vaughan Company has been manufacturing the toughest no-clog pumps in the USA. Our 3rd and 4th generation family-owned and operated company builds cutting edge products that are built to last and keep things flowing smoothly.

*Choose the unmatched  
reliability of Vaughan.*

*Ask about our free trial  
program and on-site demos.*



**GUARANTEED PERFORMANCE**

**EXPEDITED DELIVERY**

**TRUSTED HISTORY**

**888-249-CHOP | CHOPPERPUMPS.COM**

## **SESSION 5: Collection Systems 1 – Marquis A (9th Floor)**

MODERATORS: Erin Moore, Tighe & Bond; Elaine Yarbrough, GA Fleet

Wastewater: 2.0 RTC      Engineer: 2.0 PDH

### **1:30 PM: Trenchless Pipeline Installations in Differing Applications**

Various trenchless methodologies can be utilized to install new infrastructure in differing applications, including those that require crossings for highways, railroads, rivers, environmentally sensitive areas, etc. This presentation presents the outcomes of three projects that utilized trenchless technologies, including Hertel New York (Horizontal Directional Drilling), ACUA Forcemain (Horizontal Directional Drilling), Locust Grove (Microtunnel and Horizontal Auger Boring)

**Paige Gilliam, David Woolley, GHD (paige.gilliam@ghd.com)**

### **2:00 PM: Condition Assessment and Rehabilitation of a 54-inch PCCP Sanitary Force Main**

Tapping of a critical 54-inch force main failed at two separate locations. An emergency condition assessment approach was organized to determine the problem. Results of the inspection found nearly 550 linear feet of crown corrosion in a high-use area of downtown Tampa. A failure of this main could an overhead expressway, key commuter routes, and the convention center. A structural rehab option was selected, and a bypass system was designed to perform the work.

**Timothy Palmer, Wade Trim (tpalmer@wadetrim.com)**

### **3:30 PM: Eliminating the Wet Well with Direct Inline Pumping**

A direct in-line pumping method is a method of pump station design that lifts influent directly from the point of entry, eliminating the wet well. Influent is contained, eliminating odors, and reducing maintenance. Lifting directly from the invert allows for only 23" below the centerline of the gravity inlet for this pump to be installed. This reduction of depth needed greatly reduces excavation, eliminating water table issues and bed rock issues.

**Rebecca Turner, Flow Solutions (rtturner@flowsolutions.com), Daniel Madden (dmadden@flowsolutions.com)**

### **4:00 PM: Combining Five Sewer Pipelines Into One – A Sequencing Headache**

Consolidation of five influent sewers at the entrance to the City of Sunnyvale's Water Pollution Control Plant (WPCP) was needed to clear space for future facilities within the WPCP. The design included an evaluation of pipe materials culminating in the installation of fiberglass reinforced polymer mortar pipe (FRPMP), complex sequencing to keep the influent sewers online to avoid disruption to the WPCP, and relocation of several utilities.

**Justin Davidson, Carollo (jdavidson@carollo.com)**



## **WOMEN'S NETWORKING EVENT**

**MONDAY 2:30-3:30 PM**

**WILDER (4TH FLOOR)**





**CAMERON ENGINEERING**

Having celebrated **40 years** of excellence in engineering and planning is now



- The #3 Ranked Engineering Firm in the U.S. (BD+C)
- 95+ Locations Nationwide
- 2,800 Team Members / 250 in New York
- 40 years Long Island / Metro NY History
- 75 Licensed Professional Engineers in NY Metro Area / 650 Nationwide
- Full-Service Engineering & Planning
- Building Design & Infrastructure
- Sustainability & Energy Solutions
- Consulting & Advisory Services
- Water/Wastewater Expertise (scan code to learn more)



IMEGcorp.com



**Boomi Environmental**

Our experienced team of Civil and Environmental Engineers at Boomi Environmental provide effective solutions to water, wastewater, and stormwater challenges faced by municipal and industrial clients in the Northeast region.

✉ [info@boomi-environmental.com](mailto:info@boomi-environmental.com)

🌐 [www.boomi-environmental.com](http://www.boomi-environmental.com)

☎ (908)-274-3105

**One Water Solutions**

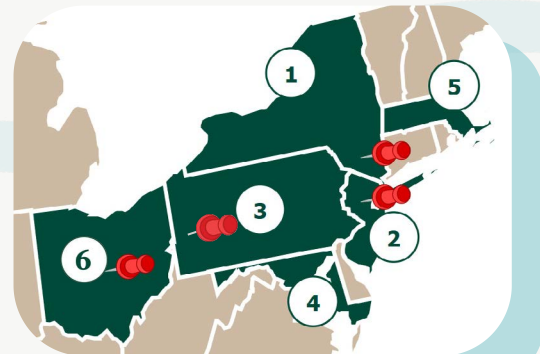
- Planning and Design Services
- H&H and Water Quality Modeling, Monitoring, Analysis
- Flood Mitigation at Various Spatial Scales
- Integrated Watershed Management

**Environmental Solutions**

- Climate Resiliency Adaptation/Mitigation
- Sustainability Consulting (LEED, ISI ENVISION)

**Infrastructure Advisory Services**

- Regulatory Compliance and Asset Management



**Business Certifications**



1. MBE with NYS and NYC
2. SBE/DBE/MBE with Port Authority of NY and NJ
3. MBE with City of Philadelphia and SBE/DBE with Pittsburgh Regional Transit
4. SBE/DBE with Maryland DOT
5. DBE/SBE with Massachusetts DOT
6. MBE with Northeast Ohio Regional Sewer District

**Monday, February 3rd, 2025**

**SESSION 6: Affordability and Funding – Marquis B (9th Floor)**

MODERATORS: Katie McGuire, Woodard & Curran; Kathryn Serra, C.T. Male Associates

Water: 1.0 (1:30 & 2:00 PM)

Wastewater: 2.0 RTC

Engineer: 0.0 PDH

**1:30 PM: Keys To Successfully Capture Funding for Water and Wastewater Projects**

The purpose of this presentation is to provide a strategic overview regarding present and emerging funding, suggested steps and governance to effectively leverage opportunities, and tools to support states and communities. This session is for any municipality water or wastewater agency interested in obtaining funding to improve water quality and resilience.

**John Dorman, AECOM (john.dorman@aecom.com)**

**2:00 PM: Clean Water State Revolving Fund Scoring System Updates**

Following the lead of the Governor, NYSEFC proposed to update the Clean Water State Revolving Fund (CWSRF) regulations to include asset management and resilience to climate change to the Project Priority System (PPS). Additionally, NYSEFC and NYSDEC saw a need for other updates due to changes in available waterbody assessment data. The scoring system is expected to be updated for the federal fiscal year 2026 Intended Use Plan.

**William Brizzell, NYSEFC (william.brizzell@efc.ny.gov)**

**(1HR) 3:30 PM: Tackling Wastewater’s Affordability Challenges: A Panel Discussion on Opportunities**

Wastewater services are expensive. Even with increasing levels of federal investment, communities still face significant costs upgrading aging infrastructure and taking climate action. Community leaders ultimately must decide how to charge rates equitably. Additionally, what happens when residents can’t pay? This panel event will discuss the tradeoffs and lessons learned from rate affordability efforts across the water sector.

**Facilitators: Tess Clark, Syracuse University Environmental Finance Center and Walt Walker, TYLin**

Panelists: Erica DePalma, US Water Alliance; William Brizzell, New York State Environmental Facilities Corporation; Phil Sapone, Raftelis



**Guest Speakers Include:** Donna Grudier, Adina Rivera, Dan Rourke, Tess Clark, Daniel Galarza Lojano, and Victoria Wanjohi

**PANEL DISCUSSION**  
**NAVIGATING THE TIDES:**  
**INSPIRING FUTURE**  
**LEADERS IN WATER**  
**MONDAY 2:30-3:30 PM**  
**MARQUIS C (9TH FLOOR)**



## **SESSION 7: Optimizing Biosolids Management – Marquis C (9th Floor)**

MODERATORS: Joseph Polomene, Sherwood Logan; Michael Lannon, Siewert Equipment

*Wastewater: 2.0 RTC      Engineer: 2.0 PDH*

### **1:30 PM: Optimizing Biosolids Management: Strategies for Cost-Effective and Sustainable Solutions**

The cost of biosolids disposal is becoming critical item for the budget planning. The Class A biosolids can be considered as asset and sellable product, while the Class B not. With current regulatory requirements and reduced access to the landfills that will accept biosolids, it is critical to set programs to decrease the biosolids volume, understand the characteristics of your biosolid in order to make biosolids management fit your budget, including biosolids contaminated with PFAS.

**Magdalena Gasior** ([magdalena.gasior@tylin.com](mailto:magdalena.gasior@tylin.com)), **Jessica Ping** ([jing.ping@tylin.com](mailto:jing.ping@tylin.com)), TYLin

### **2:00 PM: Biosolids Master Planning in an Uncertain Regulatory Climate**

In this presentation, we will illustrate how biosolids master plans (BMPs) for three utilities provide pathways for each to address their near-term needs while also enabling them to pivot when needed upon regulatory or economic triggers without stranding assets or wasting their investments.

**Rashi Gupta, Carollo** ([rgupta@carollo.com](mailto:rgupta@carollo.com))

### **3:30 PM: Thickening Optimization – Improve Performance and Benefit Multiple Plant Processes**

When thickening performance is critical to reduce hauling cost or the size of downstream unit processes, selecting the right technology and operation strategy is as important, as selecting the right thickened sludge conveyance design, polymer selection and dose control, thickened sludge TS monitoring, as well as redundancy and resiliency considerations. This presentation will provide case study results from onsite polymer testing for a new thickening system.

**Stephanie Spalding, HDR** ([stephanie.spalding@hdrinc.com](mailto:stephanie.spalding@hdrinc.com))

### **4:00 PM: What Was WAS Doing in Your Anaerobic Digester?**

Unlike primary solids, WAS does not create much benefit and is not efficiently destroyed in Anaerobic Digesters. What options might exist to handle these solids such that they can be more efficiently digested (or not!), dewatered or even thermally treated? This presentation will describe several established and other more innovative approaches to solving this unique challenge.

**Matthew Williams, Thermal Process Systems, Inc.** ([mwilliams@thermalprocess.com](mailto:mwilliams@thermalprocess.com)),  
**Eric Haslam, Thermal Process Systems, Inc.** ([ehaslam@thermalprocess.com](mailto:ehaslam@thermalprocess.com))

**MODERATORS WILL SCAN THE QR CODE ON YOUR BADGE FOR CONTACT HOURS**



## EARTH REPAIR

### DIGITAL EVALUATIONS & ANALYSIS OF SUBSURFACE SYSTEMS

SPECIALIZING IN:

#### *State-Of-The-Art Digital Scanning*

- Digital Pipe Evaluations
- Chemical Grout Pipe Repair
- Trenchless Point Repairs
- Smoke Testing
- Slip Lining
- Soil Stabilization
- Epoxy Grouting
- Manhole Rehabilitation
- Pipelining
- PACP Certified Database
- High-Velocity Sewer Jetting
- Preconstruction Video and Photography Service
- Air Pressure Testing
- Dye Testing
- Walk-Throughs
- Flow Monitoring
- Remote Crawler Units

COMPLETE ASSISTANCE TO ENGINEERING FIRMS  
IN STORM & SANITARY SYSTEMS EVALUATION  
P.E. CERTIFICATION AVAILABLE

APPROVED by:

- NYC DEP
- Suffolk
- Nassau
- NYC DOT
- Westchester
- Army Corps of Engineers, etc.
- NYC-DDC
- NYC Parks and Recreation
- NYC-MTA

## Earth Repair, LLC

Subsurface Infrastructure Evaluation & Rehabilitation

631-591-2010 • Fax: 631-591-2012



**SESSION 8: Energy Conservation – Odets (4th Floor)**

MODERATORS: Ted Nitza, Kimley-Horn; Kristen Wainwright, Hazen and Sawyer

*Wastewater: 2.0 RTC      Engineer: 2.0 PDH*

**1:30 PM: Biogas Utilization Case Studies: RNG or Cogeneration and Delivery Models**

What are the key factors behind a utility's decision to choose RNG over cogeneration or a public private partnership (P3) over design-bid-build procurement? This presentation will cover four biogas utilization case studies at large WRRFs, including the details on the decision-making criteria that led these utilities to implement different technological solutions and project delivery models.

**Alison Nojima, Brown and Caldwell (anojima@brwncald.com)**

**2:00 PM: Energy Management at WRRFs – Is Hydrogen a Viable Alternative?**

Green hydrogen, that is hydrogen produced with renewable energy, is a likely energy source to decarbonize heavy transportation and other industries. The production of hydrogen through electrolysis produces pure oxygen and thermal energy as green byproducts, which can be used at Water Resources Recovery Facilities (WRRFs). Two case studies will explore the viability of integrating hydrogen production at WRRFs, the full-scale demonstration project at St Cloud, MN and the feasibility study at Cedar Rapids, IA.

**Dale Gabel, Carollo (dgabel@carollo.com), Brendan Wolohan, Carollo (bwolohan@carollo.com)**

**3:30 PM: Yonkers JWRRF – Engine Replacement Program**

Westchester County is implementing a multi-phase engine replacement program at the Yonkers JWRRF. The program includes the replacement of the engine driven blowers with dual fuel CHP systems and implementing improvements to the aeration system, including the use of magnetic bearing turbo blowers powered directly from the cogeneration engines. This presentation will provide an overview of the program and the methodology to maximize biogas use, reduce energy consumption, provide resiliency, and improve process control.

**Megan Messmann, CDM Smith (MessmannMR@cdmsmith.com),  
Nat Federici, Westchester Co. (njf9@westchestercountyny.gov)**

**4:00 PM: Pursuing Code Compliance through Sustainability, Energy Conservation, and Model Simulation**

As climate change concerns grow, local governments and agencies prioritize sustainability and energy conservation. Energy codes and local laws now emphasize energy compliance in design projects through energy modeling. Energy modeling plays a key role in assessing energy conservation by utilizing compliant software and calculation methods while considering factors like building envelope, mechanical components, and lighting to meet codes. Through early initiation and interdisciplinary collaboration, designs can improve to be more sustainable in the future.

**Vishwa Raval (vraval@hazenandsawyer.com), Rachel Chin (rchin@hazenandsawyer.com), Kuan-Ting Wu (kwu@hazenandsawyer.com), Hazen and Sawyer**

**MODERATORS WILL SCAN THE QR CODE ON YOUR BADGE FOR CONTACT HOURS**

## **SESSION 9: Plant Hydraulics – Wilder (4th Floor)**

MODERATORS: Lauren Livermore, GHD; Casterland Fanfan, TYLin

Water: Water: 1.0 (1:30 & 2:00 PM)

Wastewater: 2.0 RTC

Engineer: 2.0 PDH

### **1:30 PM: Hydraulic and Operational Challenges at Southtowns AWTF**

Improvements at the Southtowns Advanced Water Treatment Facility (AWTF) involve substantial realignment of the plant, with the inclusion of new clarifiers, new splitter structures, and retrofits to the high purity oxygen activated sludge system (UNOX). This work describes the hydraulic and construction challenges relating to maintaining operations using two separate pumping systems to feed the UNOX units at varying stages during construction while also maintaining the ability to pump storm flows to the overflow facility.

**Heather Smith, Arcadis ([heather.smith@arcadis.com](mailto:heather.smith@arcadis.com)), Chelsea Catchpole, Arcadis ([Chelsea.Catchpole@arcadis.com](mailto:Chelsea.Catchpole@arcadis.com))**

### **2:00 PM: Utilization of Computational Fluid Dynamics Modeling to Optimize Design**

As part of the design for the Nansemond Treatment Plant (NTP) Advanced Nutrient Reduction Improvements (ANRI) Phase II improvements project, Computational Fluid Dynamics (CFD) Modeling was utilized for several unit processes to optimize design and construction. This presentation will provide details of the various CFD Modeling performed, options that were developed to optimize the design, the results of those changes in the CFD models, and how these improvements were implemented in the design.

**Marvin Weiss, Tetra Tech ([marvin.weiss@tetratech.com](mailto:marvin.weiss@tetratech.com))**

### **3:30 PM: The More Things Change... Using Dynamic Process Models to Aid in Operations and Design**

Wastewater treatment plants experience constantly changing conditions where flow, load, temperature and more change diurnally and seasonally. Despite this, plants are designed and operated using steady state calculations. This talk will show how use of dynamic models can inform both operations and design for permit compliance and aeration systems.

**Eric Staunton, Tetra Tech ([eric.staunton@tetratech.com](mailto:eric.staunton@tetratech.com))**

### **4:00 PM: Selection and Evaluation of Emerging MOB Technology for Ammonia Removal**

The paper outlines the Philadelphia Water Department's methodology for evaluating emerging ammonia removal technologies, focusing on cost-saving alternatives to conventional methods. This process identified MOB (mobile organic biofilm) as one of the top three technologies for further evaluation, showing significant potential to reduce life cycle costs. Currently in the execution testing phase, with pilot testing set for April 2025, the presentation will detail the methodology, MOB selection, and testing results.

**Mahsa Mehrdad, HDR ([mahsa.mehrdad@hdrinc.com](mailto:mahsa.mehrdad@hdrinc.com)), Jacob Metch, HDR ([Jacob.Metch@hdrinc.com](mailto:Jacob.Metch@hdrinc.com))**



**SCAN TO SUBMIT SESSION EVALUATIONS**



## **SESSION 10: Research & Innovation at the Plant – Ziegfeld (4th Floor)**

MODERATORS: Randy Ott, GP Jager; Robert Flores, Delaware Engineering

*Wastewater: 2.0 RTC      Engineer: 2.0 PDH*

### **1:30 PM: Addressing Unique Challenges to Potable Reuse and Emerging Contaminants through Piloting**

The Anne Arundel County, Maryland Our wAater Program is evaluating the feasibility of performing indirect potable reuse by adding advanced water treatment processes to an existing County water reclamation facility. A pilot system has been operational for approximately two years. The presentation will share water quality results from the AWT pilot, address the challenges encountered and solutions found during the pilot-scale study, and present strategies for validating the treatment approach for potable reuse.

**Kelsey Kenel, HDR ([kelsey.kenel@hdrinc.com](mailto:kelsey.kenel@hdrinc.com)), Ramola Vaidya, HDR ([Ramola.Vaidya@hdrinc.com](mailto:Ramola.Vaidya@hdrinc.com))**

### **2:00 PM: Intensification Case Studies: From Pilot to Full Scale Applications of Densified Activated Sludge (DAS) and Mainstream Deammonification via Partial Nitrification-Denitrification-Anammox (PdNA/PANDA)**

As WRRFs are large contributors to nutrient loading in waterways, utilities are increasingly challenged with meeting more stringent effluent limits. A key challenge and opportunity for a growing number of utilities is to find financially responsible and effective nutrient treatment. Biological process intensification strategies like densified activated sludge and pdNA/PANDA provide potential solutions. This presentation will showcase the experiences and lessons learned from multiple pilot-scale and full-scale studies of both DAS and pdNA/PANDA.

**Haley Noteboom, Hazen and Sawyer ([hnoteboom@hazenandsawyer.com](mailto:hnoteboom@hazenandsawyer.com))**

### **3:30 PM: IntensiCarb: A Novel Vacuum Process for Anaerobic Digestion Intensification**

The IntensiCarb process utilizes vacuum evaporation to decouple SRT and HRT, increasing process capacity while simultaneously reducing the influence of toxic metabolic by products through extraction (ex. ammonia-N) and recovery additional methane. This paper summarizes 5 years of research evaluating the efficacy of the process utilizing a side-by-side comparison of conventional mesophilic digestion with varying intensification factors (2x, 3x, 4x, 5x) in bench-scale trials. The process offers new opportunities for digestion intensification and resource recovery.

**Chris Muller, Brown and Caldwell ([cmuller@brwncald.com](mailto:cmuller@brwncald.com))**

### **4:00 PM: Who said MBR's Cannot be DENSE?**

Preliminary work on Membrane Bioreactors (MBR) indicates that continuous flow densification (external selection via hydrocyclones combined with adequate biological selection in continuous flow bioreactors) can improve mixed liquor filterability creating positive outcomes for MBR operation. This presentation explores the coupling of densified biomass with continuous flow MBR: process concept, modelling, full-scale demonstration plant and expected benefits for MBR design and operation including decreased OPEX, improved sludge quality, and improved performance.

**Laura Stock, Veolia ([laura.stock@veolia.com](mailto:laura.stock@veolia.com))**

**MODERATORS WILL SCAN THE QR CODE ON YOUR BADGE FOR CONTACT HOURS**

# Tuesday, February 4th, 2025

## **SESSION 11: Operator's Forum – Marquis C (9th Floor)**

MODERATORS: Tyler Masick, Albany County; Alan Oates, Monroe County

Wastewater: 2.0 RTC      Engineer: 1.0 PDH (11:00)

### (1HR) 9:00 AM: **Clear Waters Ahead: Navigating New York's Wastewater Operator Certification Program**

This session explores New York's Wastewater Operator Certification Program, a critical component in ensuring the safe, efficient, and compliant management of wastewater treatment facilities.

**Samantha McCart** ([samantha.mccart@dec.ny.gov](mailto:samantha.mccart@dec.ny.gov)), **Warren Bautista**, NYSDEC

After completion of the presentation, moderators, panelists and attendees will discuss the Operator Certification Program.

### (1 HR) 11:00 AM: **Suits and Boots, Communicating Across the Engineer/Operator Barrier**

Have you had to work with an operator or an engineer before? Have you been able to feel the tension in the room between the two? Ever wonder how the two could co-exist? Please join us for an open discussion about this necessary relationship required for the advancement of our industry. We will discuss the potential disconnect between these two groups and other parties in the room. What are the consequences of the breakdown in communication? How can we all improve this essential relationship? This will be an interactive conversation with all who are willing to participate. There is no escaping that these two groups must work together, to advance and protect public health and the environment. We look forward to having an open, honest and enlightening conversation with you!

**Stephen Sanders**, Environmental Training Center



EDR provides **water/wastewater engineering** solutions to municipalities, agencies, districts, authorities, and corporations to address their water needs.

Since our founding in 1979, EDR has provided high-quality, cost-effective planning, design, and engineering solutions that have enhanced projects and benefited our clients and their communities.

[edrdpc.com](http://edrdpc.com)

Syracuse, Rochester, Albany, Saratoga Springs & White Plains, NY  
Hershey, PA • Columbus, OH • Portsmouth, NH • Hyannis, MA





## **SESSION 12: Professional Development & Leadership (Young Professional Session) – Marquis A&B (9th Floor)**

MODERATOR: Sara Sepulveres, Carollo

*Wastewater: 0.0 RTC      Engineer: 0.0 PDH*

### **9:00 AM – 9:45 AM: Leveraging Your LinkedIn Presence**

Discover how to leverage LinkedIn as a powerful tool for enhancing your professional presence, showcasing expertise, and expanding your network. This session offers real-world success stories and actionable strategies to help you maximize LinkedIn's impact on both personal and organizational growth.

**Caroline Bishop, Tighe and Bond**

### **9:45 AM – 10:15 AM: Young Professional Coffee/Networking Break (9th Floor)**

### **10:15 AM – 11:00 AM: Leading with Conviction: Using Emotional Intelligence to Overcome Biases & Become a Better Manager**

The session will provide insights into understanding and managing your emotions, as well as those of the people around us. This can lead to better communication, collaboration, and improve one's leadership skills. We will also discuss biases and ways to overcome them, which promotes a more inclusive environment for our teams. These concepts can lead to a more empathetic and aware work environment, which improves overall performance and fosters a culture of mutual respect and growth.

**George Kansas, HDR, Kevin Hickey, Navitas**

### **11:00 AM – 11:15 AM: Break**

### **11:15 AM – 11:45 AM: Conquer the Conference: Tips from NYWEA's Program Committee Chair**

Conclude the session with valuable insights from a NYWEA Program Committee Representative. Learn about key technical themes, effective networking strategies (including questions for exhibitors and during Q&A), and how the conference program is developed to empower newer members. This Q&A session offers a unique opportunity to gain valuable knowledge from a "conference expert" and navigate the NYWEA Conference with confidence.

**Kathryn Serra, C.T. Male Associates (K.Serra@ctmale.com)**

**MODERATORS WILL SCAN THE QR CODE ON YOUR BADGE FOR CONTACT HOURS**

Tuesday, February 4th, 2025

## **SESSION 13: Asset Management – Cantor/Jolson (9th Floor)**

MODERATORS: Daniel Capano, Gannett Fleming; Danyel King, NYSDEC

Water: 2.0

Wastewater: 2.0 RTC

Engineer: 2.0 PDH

### **9:00 AM: Is Your Control System an Asset or a Liability? Learn Successful Planning and Implementation for Large-Scale Control System Replacement**

Control systems have an expiration date, a shelf-life, a best-by date. This can be difficult to predict and is driven by advances in hardware and software technology, changes in manufacturing processes and in some cases forced obsolescence by vendors. This phase in the life cycle of the hardware and software that makes up utility control systems cannot be avoided. This presentation will explore successful planning and implementation for large scale control system replacement.

**Billy Fox, HDR (billy.fox@hdrinc.com)**

### **9:30 AM: Development of Asset Management Plans for Municipalities under NY State's Asset Management Program**

This presentation will provide an overview of the State's Asset Management Program guidelines and procedures for developing AMPs and discuss innovative means and methods utilized to complete the AMP development process for multiple municipalities. Case studies for each municipality will be provided which will educate attendees on the different opinions and values of AMPs and the different approaches utilized for developing the AMPs – all while staying within the guidelines of the State's Program.

**David Barnes, Jacobs (david.barnes1@jacobs.com), Danyel King, NYSDEC**

### **11:00 AM: Don't Wait Until It's Too Late – In Situ/In Service Large Diameter Steel Pipe Rehabilitation**

Using the rehabilitation of large diameter steel pipes wastewater header as a case study, this presentation offers strategies for extending the life of water and wastewater assets. It will cover non-destructive asset inspection, remaining life estimation, and feasibility assessments. Specific pipe repair solutions presented include corrosion-protective coatings, metal-rebuilding pastes, and strength-restoring carbon fiber wraps, which were evaluated considering ASME and AWWA design standards, and may extend asset life by up to 50 years.

**Chirine Chidiac, Arcadis (chirine.chidiac@arcadis.com), Garrett Fanshawe, Arcadis (garrett.fanshawe@arcadis.com)**

### **11:30 AM: Case Histories – Extending Fiberglass Tank Life Under New NYS DEC Chemical Bulk Storage Regulations Lowers Cost: Erie County and North Tonawanda Lessons Learned**

The New York State aboveground hazardous substances storage tank inspection regulations changed in late 2023 and continue to have an even more significant impact on asset management plans. The Erie County Division of Sewerage Management and North Tonawanda Water Board share their lessons learned on how to use most recently promulgated inspection standards to extend fiberglass tank life and lower cost.

**Gary Arthur, Fiberglass Reinforced Plastics Institute, Inc. (garthur@frpi.org),  
Angela Horton, Erie County (angela.horton@erie.gov), Matt Lehman, North Tonawanda**



# Follow Our Floor Signs to Find Us in the Exhibit Hall



- Booth 98** Koester Associates
- Booth 99** Koester Associates - Service
- Booth 80** Koester Associates / AET / Andritz
- Booth 58** Koester Associates / APG-Neuros / Biorem
- Booth 59** Koester Associates / Continental Carbon / Crane Pumps
- Booth 75** Koester Associates / Duperon / Eco remedy
- Booth 73** Koester Associates / Komax / Kubota
- Booth 81** Koester Associates / Poly Processing
- Booth 57** Koester Associates / Unison / Airvac
- Booth 82** Koester Associates / Vaughan / Veolia
- Booth 100** Koester Associates / Vogelsang
- Booth 74** Koester Associates / Xylem / IFS

**Tuesday, February 4th, 2025**

**SESSION 14: The Circular Water Economy – Odets (4th Floor)**

MODERATORS: Vatche Minassian, HDR; Maryia Spirydonava, Stantec

Wastewater: 1.0 RTC (11:00, 11:30)

Engineer: 2.0 PDH

**9:00 AM: Embracing the One Water Framework to Build Resilient Utilities**

The purpose of this presentation is to help utilities and cities understand how the One Water Framework (OWF) can be utilized to either start or progress on their One Water journey and become a utility of the future. The presentation will first describe the development and structure of the OWF. Next, the application of the OWF will be illustrated using a variety of One Water case studies. Lastly, the case studies' lessons learned are shared.

**Inge Wiersema, Carollo** ([iwiersema@carollo.com](mailto:iwiersema@carollo.com))

**9:30 AM: Carbon-Based Advanced Treatment brings (Direct) Potable Reuse to the East**

Several early projects, first on the Upper Occoquan, then Gwinnett County, and now around the Hampton Roads demonstrated Carbon-based advanced treatment (CBAT) for indirect potable reuse in the East. Now, CBAT projects push towards the last frontier: direct potable reuse (DPR). Starting in 2017 with the pureALTA project in Florida, and followed by similar projects in Florida, Utah, and Tennessee, CBAT has established itself as the standard approach to DPR where desalination is not required.

**Eva Steinle-Darling, Carollo** ([esd@carollo.com](mailto:esd@carollo.com))

**11:00 AM: Converting FOG Problems into Assets**

Managing fats, oils, and grease (FOG) is often an expensive proposition for municipalities from collection and treatment to disposal. Woodard & Curran currently has a few projects with an emerging solution called Greasezilla™ that converts FOG produced in food service establishments into a saleable product which offers treatment facility operators a new revenue stream and simplifies FOG management. This presentation will discuss the technology, its implementation, operation, and financials, and lessons learned during installation and operations.

**Paul Brandt, Woodard & Curran** ([pbrandt@woodardcurran.com](mailto:pbrandt@woodardcurran.com)),  
**Jay Sheehan, Woodard & Curran** ([Jsheehan@woodardcurran.com](mailto:Jsheehan@woodardcurran.com))

**11:30 AM: Heat Recovery from Wastewater and its Potential Role in Decarbonization of the Built Urban Environment**

Cities like New York City and others in the northeast have set greenhouse gas reduction targets. New ways of looking at public infrastructure and the built environment it supports is essential if these goals are ever going to be met. Recovery of thermal energy from wastewater is a technically viable and economically sustainable source for low-carbon indoor heat and hot water. This presentation will be focus on the role, opportunities and barriers with this technology.

**Jim McQuarrie, AECOM** ([jim.mcquarrie@aecom.com](mailto:jim.mcquarrie@aecom.com))



**SCAN TO SUBMIT SESSION EVALUATIONS**

## **SESSION 15: Stormwater: Doing More with Less & Equitable Design – Wilder (4th Floor)**

MODERATORS: David Railsback, Schnabel Engineering; Gunjan Khandwala, HDR

*Wastewater: 1.5 RTC (9:00, 9:30, 11:00)*

*Engineer: 2.0 PDH*

### **9:00 AM: City of New Rochelle, Watershed Drainage Analysis: Analyzing Local Municipality Infrastructure to Identify Green and Grey Solutions for Increased Stormwater Management**

This presentation will focus on a case study describing a phased stormwater management analysis and design approach and a prioritization framework including the methodology, modeling, cost benefits, and stakeholder engagement which guided the City of New Rochelle's capital improvement plan.

**Adriana Herrera, WSP (Adriana.Herrera@wsp.com)**

### **9:30 AM: Protecting the Hudson River: How Albany and Hoboken are Scaling Smart Watershed Management Using Digital Adaptive Control to Mitigate Flooding and CSOs**

Urban stormwater management has become one of the most pervasive and significant environmental issues impacting the East Coast. With extreme weather events, aging infrastructure and urbanization leading to mounting regulatory and community pressure for flood and CSO mitigation, cities must innovate to protect property, public health and our shared waterbodies. Along the Hudson River, Albany and Hoboken are using continuous monitoring and adaptive control (CMAC) technology to turn passive infrastructure into active stormwater management assets.

**Viktor Hlas, OptiRTC Technology Co. (vhlas@optirtc.com)**

### **11:00 AM: Achieving Resilient and Equitable Solutions: Strategies for Incorporating Principles of Social Equity, Environmental Justice, and Resiliency into Stormwater and Wet Weather Planning**

This presentation will provide specific stormwater and combined sewer planning case studies where Environmental Justice (EJ) and equity tools were applied to incorporate principles of EJ and equity in the prioritization and selection of resilient stormwater and wet weather infrastructure projects, ranging from Green Stormwater Infrastructure (GSI) to CSO storage basins, to flood tunnels.

**Bryan Rogne, Brown and Caldwell (brogne@brwnncald.com)**

### **11:30 AM: The One Water Approach in Action: The MacArthur Lake Stormwater Capture Project in Downtown Los Angeles**

The MacArthur Lake Stormwater Capture Project, located in downtown Los Angeles, improves stormwater quality in an impaired watershed and disadvantaged community, reduces potable water use, increases water supply for downstream water reuse, and enhances the park with a cascading wetland and educational signage. The project puts the One Water approach in action with multi-department collaboration, broad community engagement, and enhancing the water cycle with stormwater treatment, potable water conservation, and increasing water reuse.

**Julia Schmitt, Carollo (jschmitt@carollo.com), Inge Wiersma, Corollo (iwiersema@carollo.com)**

**MODERATORS WILL SCAN THE QR CODE ON YOUR BADGE FOR CONTACT HOURS**



# GP Jager Inc.

## Your Source for Water & Wastewater Equipment



Our mission is to ensure your complete satisfaction with our manufacturers' products and services. Representing 65 high-quality manufacturers of water and wastewater treatment equipment in New York and New Jersey, we know that our projects must be well-engineered and competitively priced. We're proud to offer virtually every biological process, filtration, clarification, disinfection, chemical feed and mechanical equipment available today.



(800) 986-1994 [www.jagerinc.com](http://www.jagerinc.com)



**Proud 2025  
NYWEA  
Platinum Sponsor**



**Tuesday, February 4th, 2025**

**SESSION 16: Nutrient Removal – Ziegfeld (4th Floor)**

MODERATORS: Danelle Bishoff, Stantec; Pierre Hourani, Brown & Caldwell

Wastewater: 2.0 RTC      Engineer: 2.0 PDH

**9:00 AM: Evaluating Ultra-Low Nutrient Removal Technologies: A Northeast Case Study**

Using the Attleboro Advanced Wastewater Treatment Plant in South Attleboro, Massachusetts as a case study, this presentation will discuss technologies for compliance with increasingly stringent NPDES permit limits on total nitrogen (TN) and total phosphorus (TP) at municipal water reclamation facilities. Additionally, considerations for operations and maintenance will be discussed, as well as the process utilized to select the appropriate technologies given the corresponding limits and wastewater characteristics.

**Nigel Beaton, CDM Smith (nigellbeaton@gmail.com), Emily Korot, CDM Smith (koroter@cdmsmith.com)**

**9:30 AM: Navigating Ultra-Low Phosphorus Limits at Fish Hatcheries**

HDR was tasked with finding a method to meet an ultra-low phosphorus limit of 50 µg/L for a New England Fish Hatchery, facing new effluent nutrient permit changes. The facility, undergoing modernization, must comply with U.S. EPA guidelines under the Clean Water Act. Four phosphorus removal technologies were evaluated. The presentation will cover evaluating alternative phosphorus removal technologies, technology piloting, bench scale testing, and preliminary design.

**Samuel Brown, HDR (Samuel.Brown@hdrinc.com), Mahsa Mehrdad, HDR (Mahsa.Mehrdad@hdrinc.com)**

**11:00 AM: Decades of Successful Wastewater Intensification with BioMag® and CoMag® Systems!**

This paper presents data from multiple sites operating BioMag® and CoMag® systems over the last 10+ years. Monthly reported data demonstrates longevity and operational consistency. Each site being presented has a unique configuration and permit requirements. All sites have met/exceeded expectations and have been operating since/before 2014. Some sites include Upper Gwynedd, PA, Waterbury, VT, and Taneytown, MD.

**Richard Liebhaber, Xyelm/Evoqua (richard.liebhaber@evoqua.com)**

**11:30 AM: Enhanced Biological Nutrient Removal with an Intensified Flat Plate-MBR**

A pilot study was conducted in Sherburne, NY with an intensified flat-plate MBR in an A2/O biological process configuration. The only source of aeration was from the submerged membrane unit scour air diffuser. Complete nitrification was accomplished, as well as achieving 82% TN removal and >97% TP removal. BOD and TSS were reduced >99%, while fecal coliforms were below the detection limit.

**Larry Morris, Kubota (larry.morris@kubota.com),  
Mike Primmer, Delaware Engineering (mprimmer@delawareengineering.com)**



**SCAN TO SUBMIT SESSION EVALUATIONS**



## **SESSION 17: Emerging Contaminants – O’Neill (4th Floor)**

MODERATORS: Matt Oster, Stantec; Cristhian Mancilla, HDR

*Water: 1.5 (9, 9:30, 11)*

*Wastewater: 1.5 RTC (9:00, 11:00, 11:30)*

*Engineer: 2.0 PDH*

### **9:00 AM: Reframing the Conversation on Emerging Contaminants**

Recently, emerging contaminants such as PFAS and microplastics have become an issue of growing public concern. Utilities face the challenge of communicating information that is fact-based and understandable to the communities they serve. Technical information can often confuse and alarm the public. This presentation outlines best practices for effective public communications around PFAS and other emerging contaminants, and how to motivate a public audience to better understand and take action on the issues at hand.

**Anna Kloiber, Brown and Caldwell (akloiber@brwnald.com)**

### **9:30 AM: Photodegradation of Pesticides in Water with Model Photosensitizers**

Pesticide use has substantial societal benefits from improving crop yields but also necessitates purposeful release of pesticides to environmental systems on a regular basis. In this work, we aim to develop and validate experimental procedures for modeling the photodegradation of pesticides in environmental and engineered systems. In indirect photodegradation experiments, model photosensitizers were used to assess photodegradation of a wide range of pesticides and determine pesticide susceptibility to reaction with different photochemically produced reactive species.

**Luana de Brito Anton, New York University (ld2393@nyu.edu)**

### **11:00 AM: Leveraging Ultrapure Water System Operations to Standardize Microplastics Measurement and Control in Wastewater**

Based on how the semiconductor industry manages total organic carbon for its critical manufacturing processes, this presentation will propose a readily available, cost effective, and practical strategy for measuring and controlling microplastics in effluents from publicly owned treatment works and from industrial generators of wastewater that discharge directly to the environment.

**John Rydzewski, Carollo (jrydzewski@carollo.com)**

### **11:30 AM: Solving Forever Chemicals in Under Five Years: Aqua Pennsylvania's PFAS Program**

Aqua Pennsylvania recognized the challenge of mitigating PFAS at multiple groundwater and surface water sources within a short timeframe to comply with the federal MCL and is working with Brown and Caldwell to manage this effort as a comprehensive program. This presentation outlines the overall approach of Aqua Pennsylvania's PFAS program and how a diverse group of internal departments, consultants, vendors, and regulatory agencies is working together to deliver on this challenging but critical effort.

**Jon Reuther, Brown and Caldwell (jreuther@brwnald.com),  
Brennan Kelly, Aqua PA**

**MODERATORS WILL SCAN THE QR CODE ON YOUR BADGE FOR CONTACT HOURS**

**Tuesday, February 4th, 2025**

**SESSION 18: The Drier the Better: Case Studies on Biosolids Dryers – Hudson (7th Floor)**

MODERATORS: Jeffrey LeBlanc, Denali Water; Robert Frost, Hazen and Sawyer

Water: TBD

Wastewater: 2.0 RTC

Engineer: 2.0 PDH

**9:00 AM: Innovations with Biosolids Process Technologies**

This presentation will explore biosolids innovations and opportunities which are available or in development. These mainly include thermal technologies including drying, gasification, pyrolysis, and hydrothermal processing. With ever increasing restrictions on landfill and land application and a growing concern with emerging contaminants, specifically perfluorinated compounds (ie. PFAS), there is increasing interest in these types of thermal technologies. The state of the research on these technologies to deal with emerging contaminants will also be presented.

**Terry Goss, AECOM (terry.goss@aecom.com)**

**9:30 AM: Dryer Dust Mitigation Measures and Regional Dryer Design: Experiences from Two Plants**

This presentation will focus on two projects where lessons learned and real world experiences will be shared. The first half will be on dust mitigation measures from a paddle dryer designed by others. The second half will highlight the design of regional dryer facility. The new dryer facility will process unstabilized dewatered cake which adds chlorine dioxide to the WAS for odor reduction and be able to also handle hauled cake from another WRRF.

**Vin Apa, CDM Smith (apavl@cdmsmith.com)**

**11:00 AM: JEA's Measured Approach to Regional Biosolids Management with Drying – Setting a Trend for Utilities Concerned about Narrowing Management Options**

Treatment and the security of disposal of biosolids is constantly evolving due to more stringent regulations as new contaminants raise concerns about potential migration into biosolids and subsequent impacts. Advancements in treatment technologies offer opportunities to mitigate risks to current biosolids management options while maintaining a certain level of institutional control. Economics and utility-specific drivers and constraints play key roles in selecting the right combination of treatment technology and end use.

**Sudhan Paranjape, Carollo (sparanjape@carollo.com), Peter Blackeley, JEA (BlacPJ@jea.com)**

**11:30 AM: Live to Dry Another Day: Low Energy Residuals Drying**

Thermal drying provides opportunity to reduce biosolids volume and mass and produce a dry product suitable for thermal conversion to fuel and destruction of PFAS. However, the energy intensity, cost and operational complexity of conventional dryers has prevented this approach from becoming ubiquitous. A new generation of advanced thermal drying technologies is emerging, which use low-energy and low-temperature approaches to overcome these barriers. This presentation will compare technology using case studies from three manufacturers.

**Paul Knowles, Hazen and Sawyer (pknowles@hazenandsawyer.com)**



**SCAN TO SUBMIT SESSION EVALUATIONS**

## **SESSION 19: Public Education & Outreach – Empire (7th Floor)**

MODERATORS: Amie Lenkowiec, HDR; Magdalena Gasior, TYLin

*Water: TBD*

*Wastewater: 1.5 RTC (9:00, 11:00)*

*Engineer: 2.0 PDH*

### **9:00 AM: Public Outreach Program on The Bay Park Conveyance Project**

The Bay Park Conveyance Project was envisioned, planned and procured during the height of the pandemic. The project is an example of a very sustainable and resilient. The project included a public engagement, information and an outreach program elements of which will be highlighted here.

**Deanna Laney, NYSDEC (deanna.laney@dec.ny.gov)**

### **9:30 AM: Utilizing the Consulting Framework for Ethical Foreign Aid**

Engineers Without Borders-USA is a non-profit that partners engineers with underserved communities to implement projects to sustainably meet their basic human needs. EWB-USA has developed their International Community process model which closely mirrors the consulting framework. This presentation will step through the Western Rwanda multi-phase water distribution project and show how this framework can be used to ethically and effectively implement infrastructure projects for disadvantaged communities across the globe.

**Katie Byrnes, Brown and Caldwell (kbyrnes@brwncald.com)**

### **(1 HR) 11:00 AM: Leveraging Public Engagement and Outreach to Deliver Alexandria's Largest Infrastructure Project**

The implementation of the RiverRenew stakeholder outreach and engagement plan has been instrumental in reducing risks and key to developing and maintaining community trust during planning, design, and on-going construction.

**Isabella Evangelista, Brown and Caldwell (ievangelista@brwncald.com), Priyanka Saha, (psaha@brwncald.com)**

## **LUNCH BREAK – Exhibit Hall (5th Floor)**

**12:00 – 1:30 PM**

**MODERATORS WILL SCAN THE QR CODE ON YOUR BADGE FOR CONTACT HOURS**



# Tuesday, February 4th, 2025

## **SESSION 20: Diversity in Water: Equity, Trends, and Collaborative Partnerships – Marquis C (9th Floor)**

MODERATORS: Stephen Mitchell, TYLin; Jenelle Armstrong, Brown & Caldwell

*Wastewater: 1.0 RTC (1:30, 3:30)    Engineer: 0.0 PDH*

### **1:30 PM: Workforce Trends in Water / Wastewater Utilities: Challenges and Opportunities**

This presentation highlights the challenges of the water / wastewater workforce and explores opportunities to transform the industry, to match the current demographics. Opportunities include leveraging technological advancements, to develop knowledge capture, talent, and strategic partnerships. The presentation concludes by emphasizing the crucial importance of proactive preparation for workforce change and proposes a roadmap for attracting and retaining top talent.

**Simon Baker, AECOM** ([simon.baker@aecom.com](mailto:simon.baker@aecom.com))

### **2:00 PM: Building Partnerships through Diversity, Equity, Inclusion, and Belonging Initiatives**

This presentation will demonstrate how the Wade Trim DEI program has been successful in strengthening work partnerships, enhancing our work environment, and building a community that values the perspectives and experiences of our employees.

**Mia Mariotti, Wade Trim** ([mmariotti@wadetrim.com](mailto:mmariotti@wadetrim.com))

### **3:30 PM: DE&I Best Practices for the Water Sector**

As utilities reevaluate organizational health, diversity, equity, and inclusion (DE&I) become essential. Water Research Foundation Project #5186 advances DE&I by tailoring strategies to the unique needs of water utilities. Our findings emphasize integrating DE&I into all facets of utility management, including recruitment, hiring practices, job design, strategy, and community outreach. The report offers actionable insights and a path toward a more inclusive, equitable future for the water sector.

**Katie Porter, Brown and Caldwell** ([kporter1@brwncald.com](mailto:kporter1@brwncald.com))

### **4:00 PM: Engineering Justice in Design – Water Equity Approaches in Practice**

This presentation will present a Water Equity Practice framework for infrastructure implementation that an organization can put into action both internally (for staff and employees) and externally (social and infrastructure impact). Principle focus areas for equitable infrastructure implementation include: (1) Vision Setting; (2) Engagement, Goal Setting, Planning; (3) Funding, Financing, & Structuring; (4) Infrastructure Project and Program Delivery; (5) Service Equity; (6) Evaluation and Adaptive Management.

**Walt Walker, TYLin** ([walt.walker@tylin.com](mailto:walt.walker@tylin.com))



## SCAN TO SUBMIT SESSION EVALUATIONS

## **SESSION 21: Design Build 2 – Odets (4th Floor)**

MODERATORS: Toby Singer, Port Authority; Scott Davis, Carollo

Wastewater: 2.0 RTC      Engineer: 2.0 PDH      DBIA Credits: 2 Hours

### **1:30 PM: Successful Delivery through Collaboration: the Progressive Design Build (PDB) Silicon Valley Clean Water Regional Environmental Sewer Conveyance Upgrade (RESCU) Program**

The Silicon Valley Clean Water RESCU Program was successfully delivered using Progressive Design Build (PDB) and included the first tunnel project in North America to be completed using PDB. Project team members co-located and collaborated to progress the design and achieve impactful programmatic cost and schedule reductions. PDB is a delivery model that provides the advantage of collaboration from design through construction that is not easily obtained through traditional design-bid-build methods.

Jon Hurt, ([jon.hurt@arup.com](mailto:jon.hurt@arup.com)) Arup, Aren Hansen, Brown & Caldwell

### **2:00 PM: Utilizing a Design-Build-Operate Delivery Model for Initial Capital Improvements at Springfield's Regional Wastewater Treatment Facility**

AECOM led the design-build effort for capital improvements at the Springfield Regional Wastewater Treatment Facility (SRWTF). Major process improvements included converting the existing aeration basin process into a Hybrid MLE, utilizing the basin's existing channels. The project incorporated innovative approaches to rehabilitate existing structures and install new equipment while maintaining plant operations. AECOM's design-build approach minimized capital and operations cost, all while improving process control and efficiency.

Kevin Smith, AECOM ([kevin.smith2@aecom.com](mailto:kevin.smith2@aecom.com))

### **3:30 PM: Leveraging Market Soundings for Enhanced Design-Build Project Delivery: Best Practices and Real-World Applications**

This presentation examines the use of Market Soundings in enhancing design-build project delivery. Market Soundings help assess project viability, refine assumptions, and foster market engagement by gathering early industry feedback. This process supports informed decision-making, reduces risks, and aligns market capabilities with project demands. The session also covers best practices and case studies, demonstrating how early market engagement leads to successful project outcomes.

Gus Hrcncir ([Ghrcncir@brwncald.com](mailto:Ghrcncir@brwncald.com)), Ernie Maschner, Victaulic Company

### **4:00 PM: Project Delivery & Challenges of Novaliches-Balara Aqueduct 4 (NBAQ4) in Manila, Philippines**

The presentation will provide an overview of the Novaliches-Balara Aqueduct 4 project and how Arup worked with Manila Water to execute the construction of a new 3m(10 ft) diameter, 7.3km(4.5 mi) underground aqueduct water transfer tunnel with TBM methodology. The presentation will discuss alignment selection, tunnel excavation and intake and outlet construction methodologies. Then the focus will change to procurement of the design and build contractor and final the construction management of the project.

Li-Ling Chen, ([li-ling.chen@arup.com](mailto:li-ling.chen@arup.com)) Anil Kumar, Arup

**MODERATORS WILL SCAN THE QR CODE ON YOUR BADGE FOR CONTACT HOURS**

**Tuesday, February 4th, 2025**

**SESSION 22: CSO/SSO 1 – Cantor/Jolson (9th Floor)**

MODERATORS: Erin Moore, Tighe & Bond; George Kansas, HDR

Wastewater: 2.0 RTC      Engineer: 2.0 PDH

**1:30 PM: A City with a Plan is a City with a Vision. Developing the City-Wide Sewer Separation Master Plan in Chelsea, MA**

Attendees will learn about a successful master plan for sewer separation and drainage infrastructure upgrades that is helping to guide a community with outdated pipe networks. They will also learn how modeling plays a role in long-term solutions to sewer separation. Construction challenges will be shared in the presentation.

**Louis Mammolette, Dewberry (lmammolette@dewberry.com)**

**2:00 PM: Separating Combined Sewers Using Gray and Green Infrastructure (SS Outfalls 066/067)**

The purpose of this project was to separate ~280 acres of combined sewers in two combined sewersheds. Improvements included sanitary, and gray and green stormwater infrastructure to completely separate the basins. Detailed hydraulic modeling was used to evaluate the best future use of each existing sewer, size new infrastructure, evaluate the green stormwater infrastructure, and evaluate private I/I improvements throughout the project area.

**Ryan Rossell, Carollo (rossell@carollo.com)**

**3:30 PM: Machine Learning and SMART Sewer Management**

This presentation presents applications of machine learning techniques in collection system modeling, and a case study for smart combined sewer overflow monitoring and control project in Wilmington, DE.

**Zachary Monge, Jacobs (zachary.monge@jacobs.com), Suibing Liu, Jacobs (suibing.liu@jacobs.com)**

**4:00 PM: Dynamic Planning: Buffalo Sewer Authority's Bird Island WWTF Wet Weather Capacity Projects**

The Bird Island Treatment Facility Wet Weather Capacity project represents the largest investment in clean water infrastructure in western New York in over 40 years and will be undertaken in three phases and is expected to take approximately 10 years to complete. Our presentation will focus on Phase I, rehabilitation of the biological systems, and Phase III, expansion of the biological systems including the twists and turns encountered along the way.

**Jamie Johnson, AECOM (jamie.l.johnson@aecom.com) Ryan Christopher (rchristopher@greeley-hansen.com), TYLin, Tim Blake, Buffalo Sewer Authority (tblake@buffalosewer.org)**



**SCAN TO SUBMIT SESSION EVALUATIONS**



## **SESSION 23: Plant Upgrades & Disinfection – Marquis A&B (9th Floor)**

MODERATORS: Sundaram Solai, TYLin; Jessica Ping, TYLin

*Wastewater: 2.0 RTC      Engineer: 2.0 PDH*

### **1:30 PM: Optimizing Expansion Design through Hydraulic Modeling: A Case Study of Waco Bull Hide Creek WWTP Phase 2**

These abstract aims to explain the optimization of the expansion of an existing wastewater treatment plant using the case study of Waco Bull Hide Creek WWTP, Texas. The methodology adopted for modeling and the key findings will be explained in detail. The use of the Visual Hydraulics software for hydraulic modeling will be discussed with key features.

**Divya Bhaskaran, CDM Smith (divyakb@cdmsmith.com)**

### **2:00 PM: Beyond In-Kind Replacement: The FEV Capital Improvement Program**

In 2015, the Monroe County Department of Environmental Services (MCDES) recognized the need for a Capital Improvements Program at its Frank E. Van Lare WRRF (FEV) to improve compliance, flexibility, and resiliency. MCDES and Arcadis developed improvements to FEV's aeration system, secondary clarifiers, and electrical infrastructure, relying on bench-scale testing to optimize full-scale implementation. This presentation discusses how this approach-built confidence in full scale improvements, maximized MCDES' return on investment, and value for ratepayers.

**Andrew Kuzio, Arcadis (andrew.kuzio@arcadis.com), Michael Garland & Corky Kelsey, Monroe County**

### **3:30 PM: In-situ Replacement of a 90-Year-old WWTP – Solving a Gauntlet of Challenges at the Napanoch WWTP**

The Napanoch Wastewater Treatment Plant (WWTP), located in Ulster County NY, required nearly complete replacement due to severe deterioration and need to comply with a Consent Order. However, the WWTP was located within a confined area surrounded by a flood protection berm. This presentation shows the design challenges encountered and solutions to construct the replacement plant while continuing to maximize treatment of influent wastewater using a 6-phase construction sequence.

**Christopher Martin, GHD (christopher.martin@ghd.com), Nicole Cheplowitz, NYSOGS**

### **4:00 PM: Finding the Best Disinfection Alternative for your WRRFs**

Selection of a disinfection technology has become complicated with the addition of advanced technologies and changing regulations. Utilities often have to analyze the effectiveness, reliability, benefits, and economics of disinfection alternatives to aid in selection suitable for a specific application. An alternatives analysis can aid utilities in selection of treatment technologies that not only protect public health but that can also provide a cost savings and/or added benefits specific to their applications.

**Nicola Fontaine, Carollo (nfontaine@carollo.com)**

**MODERATORS WILL SCAN THE QR CODE ON YOUR BADGE FOR CONTACT HOURS**

**Tuesday, February 4th, 2025**

**SESSION 24: Utility Management – Wilder (4th Floor)**

MODERATORS: Nadia Mugisha, Arcadis; Michelle McEntire, Ramboll

*Wastewater: 1.0 RTC (1:30, 4:00)*

*Engineer: 2.0 PDH*

**1:30 PM: Optimize Sludge Pumping System and Right – Sizing the Sludge Pumps with AFT Fathom Hydraulic Modeling**

Approach and methodology of accurately estimating the total head of complicated sludge pumping system with hydraulic modeling software, sludge rheology test and calibration with field data. The calibrated hydraulic model will also help significantly reduce the effort to investigate various operation scenarios. As a result, all operation points of the system were well understood, and the pump was properly sized to operate in the optimum zone.

**Lisa Cheng, CDM Smith ([chengw@cdmsmith.com](mailto:chengw@cdmsmith.com)); Mohsen Sadatian, CDM Smith ([SadatianM@cdmsmith.com](mailto:SاداتianM@cdmsmith.com))**

**2:00 PM: Leveraging MCDA for the Newtown Creek CSO Tunnel Project Site Selection**

A multi-criteria decision analysis (MCDA) can be applied to evaluate complex decisions involving multiple stakeholders with differing priorities. Stakeholders are engaged to inform a structured, defensible process that is aligned with guiding principles established at the onset of the project. These efforts build organizational alignment around investment alternatives because stakeholders see how their insight influenced decisions. This presentation will highlight the MCDA analysis utilized for site selection for the Newtown Creek CSO Tunnel project facilities.

**Rachel Philipson, Brown and Caldwell ([rphilipson@brwnald.com](mailto:rphilipson@brwnald.com)), Kate Edden, NYCDEP ([kedden@dep.nyc.gov](mailto:kedden@dep.nyc.gov))**

**3:30 PM: Setting up a Program Management System for a Major Capital Projects Implementation Plan**

This presentation will discuss how Buffalo Sewer Authority (BSA) approached establishing a program management system to oversee and coordinate the extensive Queen City Clean Waters initiative and integrate into it the necessary capital work already required to operate and maintain one of the largest and oldest treatment facilities and sewer systems in New York State.

**Rosaleen Nogle, Buffalo Sewer Authority ([rnogle@buffalosewer.org](mailto:rnogle@buffalosewer.org)), Walt Walker, TYLin ([walt.walker@tylin.com](mailto:walt.walker@tylin.com)), Carina Tan, TY Lin ([carina.tan@tylin.com](mailto:carina.tan@tylin.com))**

**4:00 PM: Updating Water Demand and Wastewater Projection Modeling for NYC**

This presentation will overview the features and development of NYC Department of Environmental Protection's new water demand and wastewater projection model and its supporting geodatabase. This updated methodology provides DEP with a powerful planning tool capable of producing projections with unprecedented geographic resolution with consideration for consumption patterns by land use sector.

**Joseph Woodrick, NYCDEP ([jwoodrick@dep.nyc.gov](mailto:jwoodrick@dep.nyc.gov))**



**SCAN TO SUBMIT SESSION EVALUATIONS**

## **SESSION 25: Resiliency – Ziegfeld (4th Floor)**

MODERATORS: Michael Manning, Ramboll; Marcella Capuco, Carollo

*Wastewater: 0.5 RTC (1:30)      Engineer: 2.0 PDH*

### **1:30 PM: Future-Proofing Water Resource Recovery Facilities: Strategies for Climate Resiliency and Sustainability**

This presentation highlights the critical role of climate risk and vulnerability assessments in enhancing resiliency of water resource recovery facilities (WRRFs). Through case studies and best practices, methods for analyzing vulnerabilities, assessing risks, and developing robust resiliency strategies will be examined. Moreover, incorporating resilient design into WRRF projects via risk assessment frameworks and cost-benefit analysis tools will be discussed. Participants will gain practical insights into implementing these assessments and understanding long-term benefits of resilient design.

**Seth Kamens, JK Muir (sjkamens@gmail.com)**

### **2:00 PM: Living Shorelines – Fostering Widespread Acceptance**

Climate change and rising sea levels are escalating threats to lives, property, and infrastructure, especially in coastal areas. Miami-Dade County (NDC) faces risks including property damage, real estate loss, and marine resource threats. Living shorelines offer a resilient solution. This presentation highlights how MDC is promoting living shorelines through a comprehensive guidance document to protect its coastline and the crucial Biscayne Bay.

**Jake Oldenburger, Tetra Tech (jake.oldenburger@tetrattech.com)**

### **3:30 PM: Innovative Approaches on Adapting Tide Gate Infrastructure to be Resilient from Impacts of Climate Change – Case Study from NYCDEP Infrastructure in Staten Island, New York**

NYCDEP is proactively assessing the impacts of climate change on the operation of existing tide gate structures. A feasibility study utilized advanced H&H and CFD modeling programs to assess potential impacts at a pilot study site. The study collected monitoring datasets and development of a 3D model. The study led to developing solutions to retrofit and adapt existing tide gate to reduce risk from impacts of climate change.

**Ashok Khadka, Dewberry (akhadka@dewberry.com), Jenna DiFalco, NYCDEP (jdfalco@dep.nyc.gov)**

### **4:00 PM: Bringing Grey, Green, and Blue Infrastructure Together for Climate-Resilient Active Transportation Networks in Vulnerable Communities**

Climate change impacts are an increasing threat to urban infrastructure and are expected to disproportionately affect vulnerable communities. The Los Angeles City's Department of Public Works Bureau of Street Services (StreetsLA) is collaborating with partner agencies and the community to apply a One Infrastructure approach to proactively plan safe, sustainable, and equitable streets that prioritize the needs and character of each community.

**Lyndsey Davis, Brown and Caldwell (ldavis1@brwnald.com)**

**MODERATORS WILL SCAN THE QR CODE ON YOUR BADGE FOR CONTACT HOURS**



**Tuesday, February 4th, 2025**

**SESSION 26: Pre-Treatment – O’Neill (4th Floor)**

MODERATORS: Kevin Hickey, Navitas; Craig Hurteau, Albany County

Wastewater: 2.0 RTC      Engineer: 2.0 PDH

**1:30 PM: Headworks Loading Evaluation at FEV WRRF**

This presentation will provide an overview how the MCDES pretreatment program evaluates, develops, and implements technically based local limits for industrial users within its collection system. The County utilizes the USEPA guidance document to perform routine assessments of existing local limits and develop new limits based on site-specific conditions that are unique to that system.

**Kenneth Smith, Monroe County DES (kensmith@monroecounty.gov)**

**2:00 PM: Developing Flexible Local Limits**

Creating flexible local limits is something many pretreatment programs are unaware of. This presentation will identify alternative allocation strategies that build in flexibility to local limits while minimizing violations and enforcement required. These approaches are currently being used by many pretreatment programs and serve them very well.

**Joshua Balentine, Brown and Caldwell (Jbalentine@BrwnCald.com)**

**(1 HR) 3:30 PM: Industrial Wastewater Pre-Treatment Panel**

This will be a panel discussion about industrial wastewater treatment and pretreatment.

**Kevin Hickey, Navitas (khickey@navitas.us.com)**

Panelists: Kenneth Smith, Monroe County DES, Joshua Balentine, Brown and Caldwell, Alexandre Remnek, United States EPA



**TUESDAY 4:00-6:00 PM**  
**UPPER TERRACE (9TH FLOOR)**

**Registration Required for 35 and Under ONLY.**  
To expedite entry, please follow 9th floor event signage located near the elevators.

## **SESSION 27: Implementing Innovation – Hudson (7th Floor)**

MODERATORS: Sara Urbanczyk, GA Fleet; Mark Candido, GA Fleet

*Wastewater: 2.0 RTC      Engineer: 2.0 PDH*

### **1:30 PM: Advancements in Primary Treatment – Moving Beyond Clarification**

Primary treatment has long relied on clarification via sedimentation to achieve removals of particulate organic and inorganic constituents prior to Secondary biological treatment. However primary treatment via mechanical filtration has started to garner interest in the market due to its much smaller footprint, lower capital costs, and improved Secondary biological performance. This presentation will cover stainless-steel disk filtration which has a proven track record of over 40 years in high solids and high FOG applications, as well as almost 20 years of operation in municipal Primary treatment in the European market.

**Robert Wiley, NUOVE ENERGIE USA, Inc. (r.wiley@nuoveenergie.com)**

### **2:00 PM Optimizing Nitrogen Removal and Reducing Energy Using Low DO Operation**

The upgraded Warren, RI WWTF was completed and went online in 2019 and is designed to achieve seasonal total nitrogen (TN) limits of 5.0 and 9.5 mg/L in the summer and winter permit seasons, respectively. Through the 4 years of WWTF operation, the facility staff have progressively implemented operational measures to reduce the energy and chemical consumption of the biological treatment process. Recent operational of the WWTF has used a combination of SRT and low dissolved oxygen (DO) setpoints to achieve summer season TN concentrations of 2.5 mg/L while lowering aerations costs by approximately 50%.

**Patrick O'Donnell, INVENT Environmental Technologies (POConnell@invent-et.com)**

### **3:30 PM Regenerative Digester Gas Cleaning**

Siloxanes are commonly found in wastewater derived biogas as they are widely used in personal care products such as shampoos and lotions, but if not properly removed in the gas stream, they pose significant issues to downstream process equipment such as an engine or RNG upgrading. Conventional solutions have historically been deployed to remove these contaminants, however advancements in technology allow for minimized downtime and extended media life to provide owners with a cost saving solution. This presentation will provide insight into conditioning solutions including advanced regenerative Temperature-Swing Adsorption technology for siloxane removal.

**Hillary Grissom, GraniteFuel Engineering (hgrissom@granitefuel.com), Evan Pellici, GraniteFuel Engineering**

### **4:00 PM Lessons Learned from the Testing, Design, and Installation of the First Foam-Fractionation + Electrochemical Oxidation Treatment System for PFAS Destruction in Metal Finishing Wastewater**

This presentation will provide an overview of the selection, design, and installation of the first full-scale onsite PFAS treatment and destruction system for metal finishing wastewater.

**Louis LeBrun, Axine Water Technology (louis\_lebrun4@gmail.com)**

**MODERATORS WILL SCAN THE QR CODE ON YOUR BADGE FOR CONTACT HOURS**

**Tuesday, February 4th, 2025**

**SESSION 28: University Forum – Chelsea/Gotham (7th Floor)**

Wastewater: 0.0 RTC      Engineer: 0.0 PDH

1:00 PM: Aslhy Torres, Clarkson University

1:20 PM: Mahnoor Sultan, Manhattan University

1:40 PM: Lauren Henkler, SUNY ESF

2:00 PM: Ella Weldy, Clarkson University

**Break 2:30 - 3:30 PM**

3:30 PM: Hayden McElduff, Manhattan University

3:50 PM: Alma Rocha, New York University

4:10 PM: Kelechi Okere, Clarkson University

**LEARN**



**MORE**

2025  
**SCHOLARSHIP  
Program**

**NOW OPEN!**

Apply today at [nywea.org](https://nywea.org)

Questions? Please contact Maggie  
Simpson: [msimpson@nywea.org](mailto:msimpson@nywea.org)

Application Deadline:  
**February 28, 2025**





**SESSION 29: Collection Systems 2 – Cantor/Jolson (9th Floor)**

MODERATORS: Angela Hintz, JM Davidson Engineering; Will Stradling, Siewert Equipment

Wastewater: 2.0 RTC      Engineer: 2.0 PDH

9:00 AM: **Protecting New York City’s Water Supply with a Collection System 100 Years in the Making**

The busy commercial Hamlet of Katonah in the Town of Bedford, New York was served by aging septic systems, and its proximity to the Muscoot Reservoir meant that this could impact the water supply for New York City. Using a mix of funding sources, a combination of proven technologies, and extensive cooperation across municipal and organizational boundaries, Katonah now has modern wastewater collection, unlocking potential economic development and protecting the water quality in the reservoir.

Emily Nealon, Woodard & Curran (enealon@woodardcurran.com), Katie McGuire, Woodard & Curran

9:30 AM: **Kensico Eastview Connection Project: Current Status and Key Challenges**

The Kensico Eastview Connection Project, located in Valhalla, NY, will provide redundancy and higher capacity for potable water supply to consumers in New York City and upstate New York. This presentation will go through project journey on challenges from the early design phase through construction and coordination to obtain the resolution.

Jonalen Protacio (jonalen.protacio@arup.com), Wylie Tsang (Wylie.Tsang@arup.com), Arup, Justin Rivellino, NYCDEP

11:00 AM: **Forge River Watershed Sewer Project Overview: Protecting the Forge River**

The Forge River Watershed Sewer Project is the largest sewer collection system program undertaken by the Suffolk County Department of Public Works in the past 40 years. The \$223 million project will provide a new sewer collection and conveyance system and an advanced wastewater treatment facility. The new system will help reduce the adverse impacts of elevated levels of nitrogen in the ground and surface waters and coastal wetlands caused by cesspool and septic system failures.

Lars Augustin, Gannett Fleming (laugustin@gfnet.com)

11:30 AM: **Bypass Pumping During Construction: The Avenue U Pumping Station Rehabilitation Case Study**

The Avenue U Pumping Station rehabilitation project provides valuable insights into designing a comprehensive bypass pumping system for future infrastructure rehabilitation efforts, focusing on constructability and resiliency. As urban centers around the world continue to grapple with the challenges of aging infrastructure, the experiences gained from the Avenue U project will serve as a valuable resource for engineers and policymakers tasked with safeguarding the continuity of essential services during complex construction projects.

Tom Fini, AECOM (Tom.Fini@aecom.com)

MODERATORS WILL SCAN THE QR CODE ON YOUR BADGE FOR CONTACT HOURS

## **SESSION 30: Research & Innovation in the Collection System – Odets (4th Floor)**

MODERATORS: Alicia Vaccaro, HDR; Dahlia Thompson, Hazen and Sawyer

*Wastewater: 0.5 RTC (9:00)*

*Engineer: 2.0 PDH*

### **9:00 AM: Locating and Quantifying I/I Economically and Rapidly using a Combination of Flow and Level Sensors in Dartmouth Massachusetts**

Dartmouth, MA requested an economical way to characterize Inflow and Infiltration (I/I) in their sewer system. An innovative approach combining a small number of flow meters with numerous level sensors to subdivide larger metered watersheds was implemented. This allowed rapid quantification and identification of I/I on a systemwide basis in less than six months. Compared to traditional flow-meter-only approaches, this technique achieved significant time and cost savings while providing actionable data for I/I removal.

**Ben Agrawal, Hazen and Sawyer ([bagrawal@hazenandsawyer.com](mailto:bagrawal@hazenandsawyer.com))**

### **9:30 AM: FloodNet Sensors and Deployment NYC**

FloodNet is an informational tool that tracks flooding frequency, severity, and allows communities, researchers, and NYC agencies to analyze flooding across NYC. Through ultrasonic sensors, chosen for their affordability and practicality, the FloodNet team draws on city and community knowledge to strategically place these devices in flood vulnerable areas to collect real-time data on flooding throughout the city.

**Anna Botwina, NYCDEP ([abotwina@dep.nyc.gov](mailto:abotwina@dep.nyc.gov)), Polly Pierone, FloodNet ([polly.pierone@nyu.edu](mailto:polly.pierone@nyu.edu))**

### **11:00 AM: Redesigning Urban Shorelines for Resilience**

There is an urgent need for innovative replacements of conventional sea walls to protect the urban edge, support biodiversity, and elevate human experience. The main goal of the Urban Shorelines project is to design a new type of infrastructure to better protect urban shorelines while simultaneously enhancing local biological communities and human engagement with the coastline.

**Robert Acker, Arup ([robert.acker@arup.com](mailto:robert.acker@arup.com))**

### **11:30 AM: Wastewater Surveillance is an Important Public Health Tool**

Wastewater surveillance has been used to monitor levels of various illnesses and substances to track prevalence and monitor trends since the 1940s. WWS and analysis of the SARS-CoV-2 viral load coupled with epidemiological trends provides an opportunity to prepare communities for COVID-19 surges. Early notification provides a unique opportunity to better prepare communities and public facilities. This same tool can be used to understand trends of other diseases and conditions such as opioid use.

**Irina Gelman, Nassau County ([IGelman@nassaucountyny.gov](mailto:IGelman@nassaucountyny.gov))**



**SCAN TO SUBMIT SESSION EVALUATIONS**

## **SESSION 31: Managing Your Biosolids: Class A, PFAS, and More – Wilder (4th Floor)**

MODERATORS: Lina Posso, Carollo; Sarah Teevan, Hazen and Sawyer

*Wastewater: 2.0 RTC      Engineer: 2.0 PDH*

### **9:00 AM: Direct Comparison Between Thermal Hydrolysis and Thermophilic Digestion as Alternatives for Class A Biosolids Management**

Whilst thermal hydrolysis and thermophilic digestion are well know options for the production of Class A biosolids, very little work has been done to directly compare how they perform against each other and with respect to a control via mesophilic digestion. This paper will show results of a laboratory study looking at how they influence digestion and production of Class A biosolids under identical conditions.

**Bill Barber, Cambi (bill.barber@cambi.com)**

### **9:30 AM: Navigating the Path to Class A Biosolids: Startup, Optimization, and Four Years of Insights at HRSD's Atlantic Treatment Plant**

In mid-2020, HRSD's Atlantic Treatment Plant transitioned to Class A biosolids using Cambi thermal hydrolysis. This presentation covers startup, optimization, aerobic curing, and recent lessons learned, including troubleshooting rapid rise events and assessing digester health now that the plant is four years post-startup. It also highlights a successful zero-loadout Cambi shutdown. Ultimately, THP and aerobic curing have prepared HRSD for future regulatory changes, including advanced treatment for PFAS and CECs.

**Dana Gonzalez, Carollo (dgonzalez@carollo.com), Holly Anne Matel, HRSD (HMatel@hrsd.com)**

### **11:00 AM: Biosolids Gasification and Pyrolysis – Lessons Learned from Early Adopters**

Gasification and pyrolysis processes, although considered proven and have been successfully used for decades by the energy and biomass industry, are considered innovative for the wastewater industry. Commercial scale experience with implementation of pyrolysis and gasification for biosolids is limited. Using case studies, the presentation will provide an understanding of lessons learned during implementation of pyrolysis and gasification for biosolids treatment, design considerations, procurement and construction considerations, O&M requirements and biochar beneficial use.

**Jay Surti, GHD (Jay.Surti@ghd.com)**

### **11:30 AM: A Surveillance of PFAS in Biosolids and Sludge at 27 Water Resource Recovery Facilities Across the USA and Western Canada**

In the Fall of 2021, US EPA awarded \$6 million to four organization under its national priorities program to evaluate pollutants in biosolids. In addition, the Great Lake Water Authority (GLWA) provided funding to include additional WRRFs in the study. This surveillance study evaluated the concentrations of PFAS in biosolids and sludge at 27 water resource recovery facilities across the USA and Western Canada.

**Shubha Oza, Brown and Caldwell (SOza@brwncald.com)**

**MODERATORS WILL SCAN THE QR CODE ON YOUR BADGE FOR CONTACT HOURS**



## **SESSION 32: Water Reuse and Pumping – Ziegfeld (4th Floor)**

MODERATORS: Kristin Wilkinson, Hazen and Sawyer; Oleg Fomin, TYLin

*Wastewater: 2.0 RTC      Engineer: 2.0 PDH*

### **9:00 AM: Bay Park Conveyance Project, New York – From Planning to Construction**

The Bay Park Conveyance Project (a collaboration between Nassau County and New York State Department of Environmental Conservation) will divert treated effluent away from the Western Bays of Long Island to an existing ocean outfall. The works include 3.6 miles of microtunneling, 7 miles of sliplining, 14 shafts, and a 75 MGD pump station. This presentation provides an overview from the perspective of the Owner's Engineer (WSP) regarding planning, design, construction, and commissioning.

**David Smith, WSP (David.i.smith@wsp.com), Syed Haq, WSP (syed.haq@wsp.com)**

### **9:30 AM: Startup and Commissioning of the New Main Sewage Pumping System at the Coney Island Wastewater Resource Recovery Facility**

Replacement of the 220 MGD main sewage pumping system and associated piping and equipment at the Coney Island WRRF in Brooklyn, NY presented a generational opportunity to bring pumping facilities up to present standards. Main pumps, motors, drives, starters, and controls were replaced with new equipment, requiring a structured, complex startup program including operator training and equipment integration. This presentation will discuss the development and execution of the startup sequencing.

**Timothy Groninger, HDR (Timothy.Groninger@hdrinc.com), Chris Malinowski, HDR (chris.malinowski@hdrinc.com)**

### **11:00 AM: Designing a Water Reuse System for the South Shore Water Reclamation Facility**

A newly implemented water reuse system at the South Shore Water Reclamation Facility in Nassau County provides an example of how municipalities can sustainably recycle effluent water within their facilities to reduce water bills and reliance on utility water. This presentation will also examine the existing regulatory frameworks for water reuse in the State of New York, and its potential for future expansion.

**Larry Ge, Hazen and Sawyer (lge@hazenandsawyer.com) James Gowans, Veolia Long Island (james.gowans@veolia.com)**

### **11:30 AM: Case Studies of Advanced Filtration Technology in Primary and Wet Weather Treatment Across North America**

Explore viable technologies for expanding biological capacity through advanced primary and wet weather treatment, with a focus on Pile Cloth Media Filtration (PCMF). PCMF's versatility in treating primary influent, effluent, and wet weather flows will be highlighted. Case studies from North America will demonstrate how PCMF technology has effectively expanded biological treatment capacity, ensured compliance with facility permit requirements, and eliminated untreated wet weather discharges.

**John Dyson, Aqua-Aerobic Systems Inc. (jdyson@aqua-aerobic.com)**



**SCAN TO SUBMIT SESSION EVALUATIONS**

## **SESSION 33: Regulatory – O’Neill (4th Floor)**

MODERATORS: Tom Saldutti, Stantec; Ted Nitza, Kimley-Horn

*Wastewater: 1.5 RTC      Engineer: 1.5 PDH*

### **(1HR) 9:00 AM: Unified Stormwater Rule – A SWPPP through 3 years of NYC’s new Stormwater Permitting Program**

February 2025 marks 3 years since the NYC USWR went into effect. This presentation provides an opportunity for DEP to engage with the NYC water community, to overview key milestones and benefits of the NYC USWR journey thus far. It will cover key benefits of the USWR, overview the permit process and provide strategies for navigate it efficiently, and present the updated SWPPP template as a key tool to meet applicable requirement.

**Clare Moriarty, Arcadis ([clare.moriarty@arcadis.com](mailto:clare.moriarty@arcadis.com)); Margaret O’Connor, NYCDEP ([moconnor@dep.nyc.gov](mailto:moconnor@dep.nyc.gov))**

### **11:00 AM: A Scientific and Regulatory Framework for Adaptive Management of Nitrogen Loading to Coastal Waters**

This paper presents the Great Bay (NH) as a case study for the adaptive management of water quality in coastal waters. This network of tidal rivers, bays, and harbors experienced historical declines in seagrass, but there was a lack of scientific consensus on drivers and solutions. Ultimately, stakeholders negotiated the terms of Great Bay Total Nitrogen General Permit, including a utility-authored adaptive management plan that charts a course for future permit terms.

**Clifton Bell, Brown and Caldwell ([cbell@brwnncald.com](mailto:cbell@brwnncald.com))**

### **11:30 AM: Emerging Issues and Solutions in Wastewater Disinfection**

This presentation provides an overview of the regulatory framework for wastewater disinfection, will present results for comparative disinfectant results across various indicators, and demonstrate how an improved disinfection model could be adapted to optimize treatment performance. The project, WRF Project #5219, includes participation of more than 10 WRRFs across the US and Canada and results of this project may have a significant impact on disinfection practices across North America.

**Katherine Bell, Brown and Caldwell ([kbell@brwnncald.com](mailto:kbell@brwnncald.com)), John Conway, Brown and Caldwell ([jconway@brwnncald.com](mailto:jconway@brwnncald.com))**

## **LUNCH BREAK – 4th Floor**

**12:00 – 1:30 PM**

**MODERATORS WILL SCAN THE QR CODE ON YOUR BADGE FOR CONTACT HOURS**

## **SESSION 34: Resource Recovery – Cantor/Jolson (9th Floor)**

MODERATORS: Julie Stein, HDR; Kinnari Shah, Hazen and Sawyer

*Wastewater: 2.0 RTC      Engineer: 2.0 PDH*

### **1:30 PM: Approaches to detect, quantify, and measure fugitive methane emissions at New York City WRRFs**

New York City's Department of Environmental Protection has launched a fugitive methane emissions reduction initiative across its 14 WRRFs. The program uses advanced detection and quantification techniques to identify and mitigate methane leaks, improving air quality and public health. Ground-level surveys were employed to locate hotspots, and DEP is currently assessing the use of various quantification technologies. The initiative aims to enhance the agency's GHG inventory through targeted upgrades and retrofits.

**Aditya Desai, NYCDEP (addesai@dep.nyc.gov), Aram Aslanian-Persico, NYCDEP (aaslanianpersico@dep.nyc.gov)**

### **2:00 PM: Phosphorus Removal and Recovery – Converting Wastewater Treatment Plants to Water Resource Recovery Facilities**

The presentation will provide the audience basic fundamentals of phosphorus removal via chemical and/or biological treatment and how phosphorus is being recovered for beneficial reuse. A business case example will be presented that discusses avoided costs and benefits of phosphorus recovery.

**Joseph Husband, Arcadis (Joe.husband@arcadis.com)**

### **3:30 PM: Biogas to Biomethane – Design, Construction and Operation Lessons Learned**

The Lulu Island WWTP Sludge Gas Treatment System upgrades surplus biogas produced from the digesters and delivers pipeline quality biomethane to the natural gas utility. The focus of this discussion is on the challenges faced during the design, construction, and operation of the treatment system, including technology selection, fluctuating surplus biogas flow, and process design and control considerations. Construction of the system was completed in September 2021, and it is currently in operation.

**Laura Locke, AECOM (laura.locke@aecom.com)**

### **4:00 PM: What's it Worth to You? Arlington Re-Gen Biogas Utilization Evaluation**

The purpose of the biogas utilization evaluation was to review all feasible alternatives for the beneficial use of the biogas to assist in meeting the County's sustainability goals while also meeting the energy needs of the WPCP and then perform monetary, non-monetary, and sustainability evaluations to determine the recommended alternative for the County. The scope of the analysis included only biogas utilization portion of the Program, and not any other of the solids handling components.

**Brian Bakke, HDR (brian.bakke@hdrinc.com)**



**SCAN TO SUBMIT SESSION EVALUATIONS**

## **SESSION 35: CSO/SSO 2 – Odets (4th Floor)**

MODERATORS: Robin Miller, HDR; Andrew Watson, HDR

*Wastewater: 2.0 RTC      Engineer: 2.0 PDH*

### **1:30 PM: CSO Program: Post-Construction Compliance Monitoring**

The CSO Control Policy requires implementation of NMCs, an LTCP, and PCCM. Following implementation of an LTCP, communities are expected to implement a PCCM program to verify the effectiveness of the CSO controls and attainment of water quality standards. This presentation will include an overview of the PCCM requirements, the USEPA guidance, and a regulatory perspective for how to develop a satisfactory program. A case study of recently approved PCCM programs will also be presented.

**Steven Wood, NYSDEC ([steven.wood@dec.ny.gov](mailto:steven.wood@dec.ny.gov))**

### **2:00 PM: No Feasible Alternative: The Planning and Design of a Secondary Bypass at the Passaic Valley Sewerage Commission to Drastically Reduce CSO Discharges**

The Passaic Valley Sewerage Commission (PVSC) is in the process of implementing a secondary treatment bypass to expand its wet weather treatment capability up to a capacity of 720 mgd. In addition to the secondary bypass, the project includes the redirection of sludge recycles from their current discharge location at the head of the oxygenation tanks to the head of the Primary Clarifiers (PCs), as well as new screening facilities for the PC effluent flow.

**Nicholas Bowen, Hazen and Sawyer ([nbowen@hazenandsawyer.com](mailto:nbowen@hazenandsawyer.com))**

### **3:30 PM: Get Your Mind in the Gutter: Overcoming Planning and Design Challenges of a CSO Retention Tank**

This presentation will discuss the planning and corresponding systemwide hydraulic modeling, and design work that HDR and Boswell team has performed for the North Bergen, as they work to address the Long-Term Control Plan (LTCP) for reducing combined sewage overflow (CSO) within their community. North Bergen is one of the first of the PVSC CSO communities to tackle addressing the LTCP by completing the design of 5-million-gallon CSO storage tank.

**Jeffrey Arnesman and Hayley Bundz, HDR ([hayley.bundz@hdrinc.com](mailto:hayley.bundz@hdrinc.com))**

### **4:00 PM: Hydraulic and Constructability Design Considerations for Flow Diversion, Control, Drop Shafts, and Outfalls for CSO Tunnels**

The presentation introduces the first of the three deep CSO tunnels - the Ohio River Tunnel (ORT), of ALCOSAN's Clean Water Plan, and then focuses on the planning and design considerations of the critical near surface CSO flow diversion and control regulators, outfalls, deep flow drop shafts. A focused example will be given to one of the six flow capture and regulating Near Surface Facilities, that is concentrated at the tunnel downstream terminus shaft site.

**Zhenqi Cai, Mott MacDonald ([zhenqi.cai@mottmac.com](mailto:zhenqi.cai@mottmac.com)), Daniel Sharek, Allegheny County ([daniel.sharek@alcosan.org](mailto:daniel.sharek@alcosan.org))**

**MODERATORS WILL SCAN THE QR CODE ON YOUR BADGE FOR CONTACT HOURS**



## **SESSION 36: NYC Stormwater – Wilder (4th Floor)**

MODERATORS: David Stahl, AKRF; Sarah Teevan, Hazen and Sawyer

Wastewater: 1.5 RTC (2:00, 2:30, 4:00)

Engineer: 2.0 PDH

### **1:30 PM: Building a New Green Infrastructure Maintenance Workforce in NYC**

NYC Department of Environmental Protection is launching a green infrastructure workforce development pilot program intended to diversify its green infrastructure maintenance by working directly with community partners to manage over 1,000 right-of-way rain gardens in Brooklyn and Queens. The program will provide valuable on-the-job training to participants in green infrastructure maintenance and horticultural care and aims to develop a workforce pipeline to feed the City's growing need for green infrastructure service professionals.

**Alisen Downey, NYCDEP (adowney@dep.nyc.gov)**

### **2:00 PM: NYC Green Infrastructure Grant Program – Lessons Learned and Looking Ahead**

Since its introduction in 2011, the Green Infrastructure Grant Program has sought to strengthen public-private partnerships and public engagement regarding the design, construction, and maintenance of green infrastructure on private property in NYC. To date, DEP has committed more than \$14 million for 34 private property owners to build green infrastructure through the Grant. This presentation will cover lessons learned and the program's evolution from over a decade of implementing the Grant Program in NYC.

**Nyleen Euton, NYCDEP (neuton@dep.nyc.gov)**

### **3:30 PM: NYC Cloudburst Resiliency: Transformational Community Adaptation through Strong Partnerships**

A "cloudburst" is a sudden, heavy downpour that can overwhelm sewer systems and result in flash floods. NYC's Cloudburst Program will protect vulnerable communities, mitigate flood damage, and improve water quality. Based on this project's recommendations, the city will construct \$400 million of Cloudburst Resiliency Projects to better manage intense rainfalls in flood-prone neighborhoods. This presentation covers: Program Goals; Social and Physical Vulnerability Assessment; Opportunity Screening and Adaptation Analysis; Adaptation Toolbox; Social and Economic Considerations.

**Kevin Obey, Hazen and Sawyer (kobey@hazenandsawyer.com), Roopesh Joshi, NYCDEP (jbrock@dep.nyc.gov)**

### **4:00 PM: Modeling Dynamic Capture Rates for Porous Pavements**

CFD modeling was utilized to evaluate the performance of roadway porous pavement under wet weather conditions. Estimates of the stormwater capture efficiency were calculated for rainfall events and compared to infiltration rates determined under static conditions (ASTM C1701). The rainfall capture infiltration rate was 75-80% of the observed ASTM infiltration rate due to the dynamic nature of flow interacting with the panel. These results were utilized to inform GI modeling in larger-scale models like SWMM.

**Heather Smith, Arcadis (heather.smith@arcadis.com), Miki Urisaka, DEP (MUriSaka@dep.nyc.gov)**



**SCAN TO SUBMIT SESSION EVALUATIONS**

## **SESSION 37: Climate Impact & Sustainability – Ziegfeld (4th Floor)**

MODERATORS: Vincent Rubino, Wade Trim; Marissela Gomez, Stantec

*Wastewater: 2.0 RTC      Engineer: 2.0 PDH*

### **1:30 PM: Finding Fugitives: Where Wastewater Agencies Can Make a Climate Impact**

Cities and utilities in New York have carbon neutrality goals and climate action plans to address climate change. This presentation will provide an overview of GHG emissions from WRRFs, feature case studies, and discuss opportunities for mitigation with detailed discussion about fugitive methane and nitrous oxide emissions associated with biosolids, energy production, and nutrient removal.

**Bill Brower, Brown and Caldwell (BBrower@BrwnCald.com)**

### **2:00 PM: Developing GHG Inventory Tools for Water and Wastewater Facilities: A Mountain Utility's Example**

A greenhouse gas (GHG) inventory tool can be critical in establishing tradeoffs between sustainability and operational costs. For example, a GHG inventory tool developed for Eagle River Water and Sanitation District (ERWSD) demonstrated how understanding emissions can be used to help with planning and design. The tool has been used to establish a GHG emissions baseline, compare emissions pre- and post-facility upgrades, and as part of an alternatives analysis to factor emissions into design decisions.

**George Kontos, Carollo (gkontos@carollo.com)**

### **3:30 PM: Fire Island; Sustainable Wastewater Management Plan**

Fire Island is a barrier island bordered by the Great South Bay and the Atlantic Ocean. Fire Island receives 2 million visitors each year. There is one WWTP in Ocean Beach. Most parcels use onsite treatment of cesspools, septic tanks and leaching pools. High groundwater makes their effectiveness marginal. The Plan identifies sustainable treatment alternatives. Factors that influence treatment technologies efficacy include sea level rise, depth to groundwater, vicinity to the ocean/ bay, and seasonality.

**Steve Hadjiyane, IMEG Corp. (steve.hadjiyane@imegcorp.com),**

**Adrienne Esposito, Citizens Campaign for the Environment (aesposito@citizenscampaign.org)**

### **4:00 PM: Integrating Sustainability in the Design and Construction of Water Infrastructure: Insights from the Kensico Eastview Connection**

Sustainability in water infrastructure is often centered on maximizing efficiency, implementing nature-based solutions, and reducing combined sewer overflows. However, in many other forms of infrastructure, decarbonization is the focus. This session aims to bridge this gap by highlighting the ways sustainability – with a focus on decarbonization – can be incorporated into water infrastructure projects, using the Kensico Eastview Connection as a case study and recent NY State and City sustainability policies as critical context.

**Sonja Hartmann, Arup (sonja.hartmann@arup.com)**

**MODERATORS WILL SCAN THE QR CODE ON YOUR BADGE FOR CONTACT HOURS**

**Wednesday, February 5th, 2025**

**SESSION 38: PFAS – O’Neill (4th Floor)**

MODERATORS: Bridget Fitz-James, C.T. Male Associates; Nancy Struzenski, Pace Labs

*Water: 2.0*

*Wastewater: 2.0 RTC*

*Engineer: 2.0 PDH*

**1:30 PM: Solutions to PFAS in the Real World**

EPA’s April 2024 issuance of MCLs for six PFAS chemicals is the latest regulatory measure affecting water and wastewater systems and assessing retrofitting systems to remove PFAS. This presentation covers real world PFAS treatment systems implemented over the past three years and examples of why certain PFAS treatment was selected and approaches and lessons learned to how facilities/sites were retrofitted. Four example sites are covered including projects recognized as ASCE Projects of the Year.

**Steve Tedesco, Tetra Tech ([steve.tedesco@tetratech.com](mailto:steve.tedesco@tetratech.com))**

**2:00 PM: Navigating the Challenges and Implementing Innovative, Cost-Effective PFAS Compliance Strategies**

This presentation will discuss a range of compliance strategies ranging from source water management to optimization of existing treatment to identification and implementation of innovative treatment approaches. It will discuss some of the unique challenges associated with PFAS and present case studies of utilities' experiences throughout the U.S. and their approaches to navigate the challenges presented by the recent rule and their innovative compliance and funding strategies to comply with the rule.

**Chris Hill, AECOM ([christopher.hill@aecom.com](mailto:christopher.hill@aecom.com))**

**3:30 PM: Practical Lessons for Integrated PFAS Management at WRRFs**

This paper will provide insights into best practices for mitigating PFAS as related to management of water resource recovery facilities. Three case studies will be used to provide practical insights into how these strategies may be implemented at full-scale WRRFs.

**Wendell Khunjar, Hazen and Sawyer ([wkhunjar@hazenandsawyer.com](mailto:wkhunjar@hazenandsawyer.com))**

**4:00 PM: A Micro Sorbent Alternative to using GAC and IX for PFAS Removal**

The paper and presentation will look at a range of source waters from drinking water to stormwater to brine waste from RO with varying concentration of PFAS levels. These levels of PFAS ranged from 25 ng/l to >20,000 ng/L. The results will compare adsorption rates of this new micro-sorbent to GAC and IX.

**John Dyson, Aqua Aerobic ([Jdyson@aqua-aerobic.com](mailto:Jdyson@aqua-aerobic.com))**

**MODERATORS WILL SCAN THE QR CODE ON YOUR BADGE FOR CONTACT HOURS**

VISIT US IN BOOTH 25  
AT NYWEA 2025!



**ONE OF THE LARGEST WASTE-BY-RAIL EQUIPMENT FLEETS IN THE NORTH AMERICA**

**34**

car spots  
(89' railcars)

**363**

railcars

**3,000+**

intermodal  
containers

**170**

intermodal  
chassis

**ASSETS AND CAPABILITIES**

- Conrail-served with direct connections to Norfolk Southern and CSX through long-term rail transportation service agreement
- 500,000 tons transported annually
- Permitted capacity to process 3,400 tons per day and up to 1.2 million tons annually
- More than 25 years of experience handling waste materials by rail with over 11 million tons safely transported

**LOWER COST. BIGGER REACH.**

Nationwide rail transport – it's a safe, efficient and budget-savvy method of delivering waste and recyclable materials to treatment, beneficial reuse or disposal facilities. The costs are low and the benefits high including reducing carbon footprints, streamlining fossil fuel use and minimizing the impact on community traffic.

**TRANSPORTING FREIGHT. TRANSFORMING BUSINESS.**

Utilizing the vast experience and history of our Environmental Protection & Improvement Company, LLC (EPIC) team, Synagro's nationwide rail transportation solutions provide the most straightforward, reliable and cost-effective way to transport.

Our comprehensive logistics support addresses the full range of your transportation needs including:

- Dewatered sewage sludge;
- Coal combustion byproducts including fly ash, bottom ash, boiler slag and flue-gas desulfurization gypsum (FGD);
- Contaminated soils (hazardous and non-hazardous);
- Low-level radioactive waste;
- Industrial/special wastes;
- Municipal solid waste;
- Construction and demolition debris (C&D);
- Industrial general commodities;
- ISO tank containers; and
- Drilling waste (cuttings and water).

Through our signature integrated transportation programs combining truck, rail and beneficial reuse/disposal facilities, Synagro brings you an effective solution to a wide array of transportation challenges. And we make it easy to track information and shipment status to satisfy business, operational and regulatory requirements.

For more information, contact Elliot Pomeranz at 973-856-4418 or by email at [epomeranz@synagro.com](mailto:epomeranz@synagro.com).

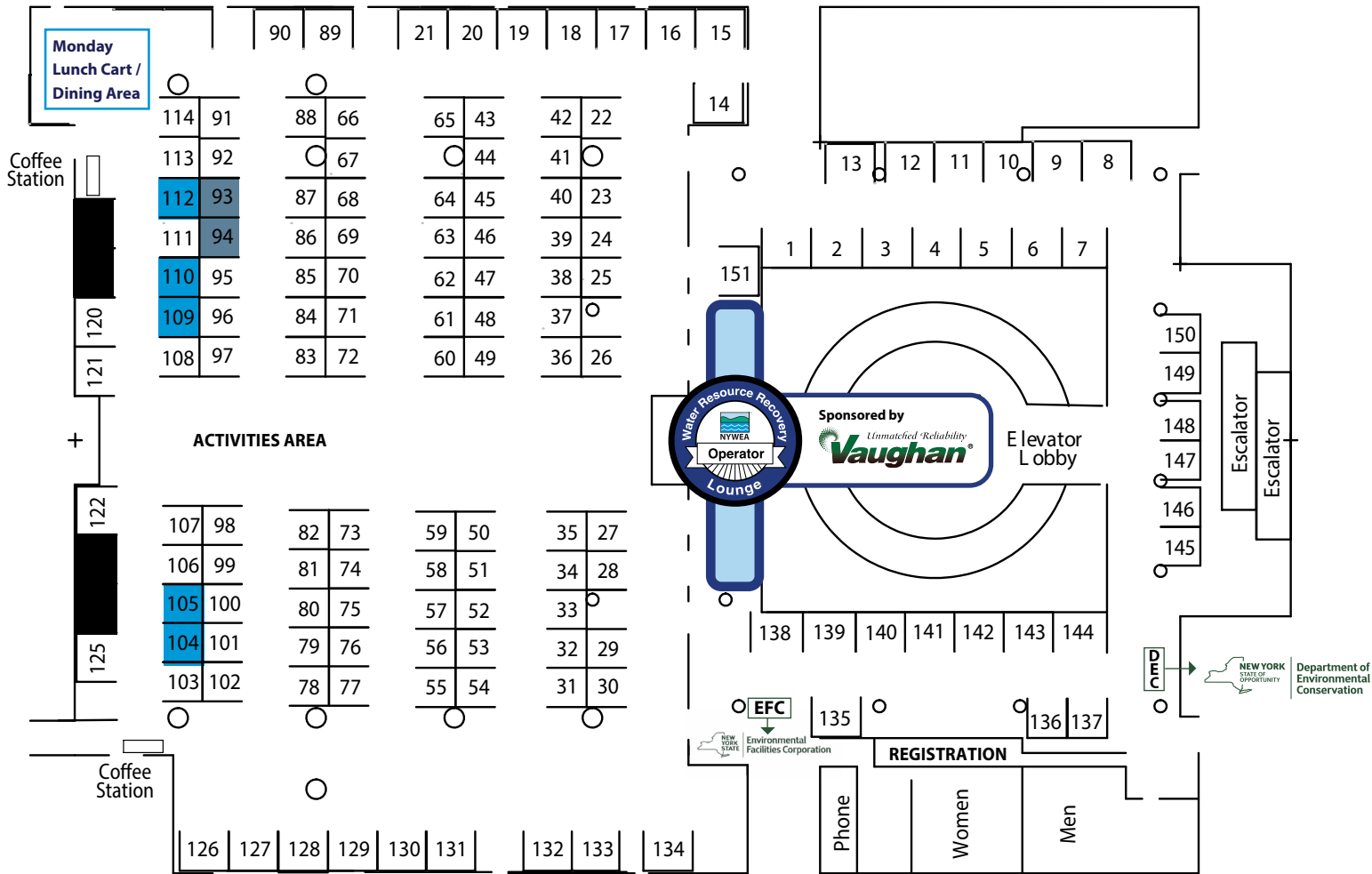


# 2025 ANNUAL MEETING MAPS

CLICK FOR INTERACTIVE EXHIBIT HALL MAP

## EXHIBIT HALL, 5TH FLOOR

**NYWEA**—112 Badge Ribbons, 110 Clear Waters, 109 Membership, 104-105 Annual Meeting Programs



### # EXHIBITOR

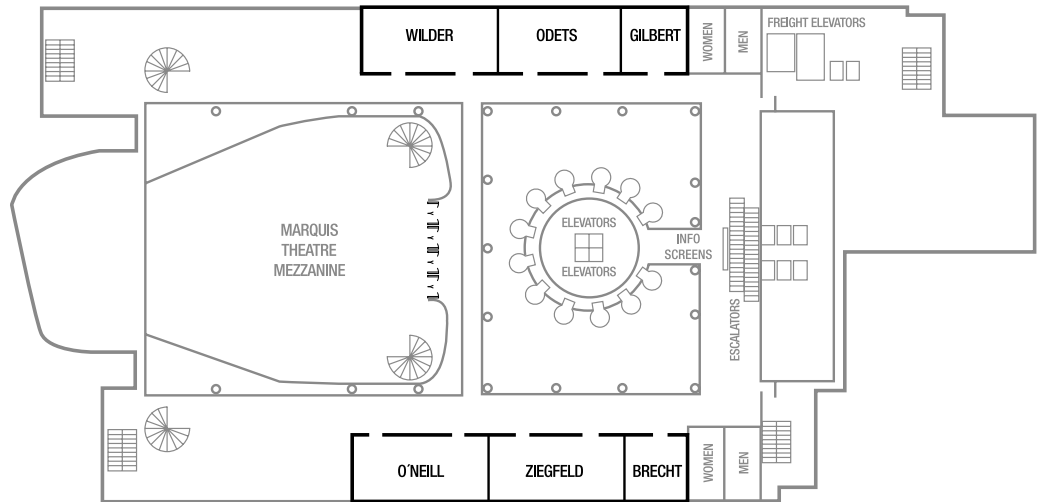
- 145** ADS Environmental Services
- 31** Aqualitec
- 84** Atlantic Fluid Technology
- 21** Atlas Copco Blowers
- 132** BDP
- 28** Brunel Corporation
- 91** Casella
- 45** Clearflo Technologies, Inc. / Clean Green Recycling, Corp.
- 35** Coppola Services, Inc
- 97** Corrosion Products and Equipment
- 108** Corrosion Products and Equipment
- 95** Cues Inc.
- 148** D.W. Martine & Associates

### # EXHIBITOR

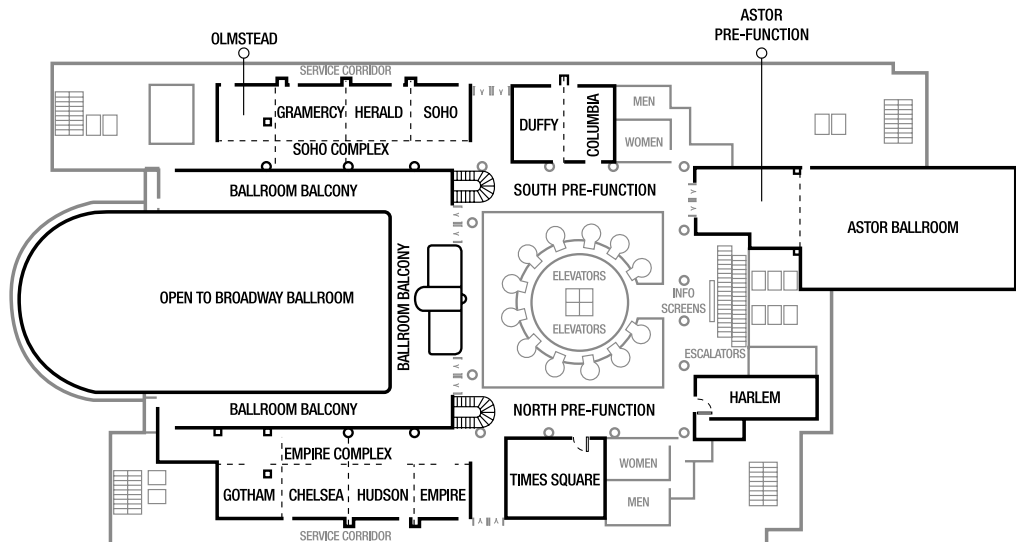
- 48** Dave Heiner Associates / SmartCover
- 37** Dave Heiner Associates / Albin Pump
- 38** Dave Heiner Associates / Gabriel Novac & Associates
- 47** Dave Heiner Associates / Pulsafeeder / CST
- 36** Dave Heiner Associates / Rodney Hunt
- 49** Dave Heiner Associates / Teledyne ISCO
- 26** Dave Heiner Associates / Vahn Tech International
- 46** Dave Heiner Associates / Wastecorp Pumps
- 39** Dave Heiner Associates, Inc.
- 42** Denali Water Solutions
- 147** Dongo Water & Wastewater Equipment Sales, LLC
- 29** Earth Repair, LLC
- 41** Eastern Controls
- 67** EJ

# 2025 ANNUAL MEETING MAPS

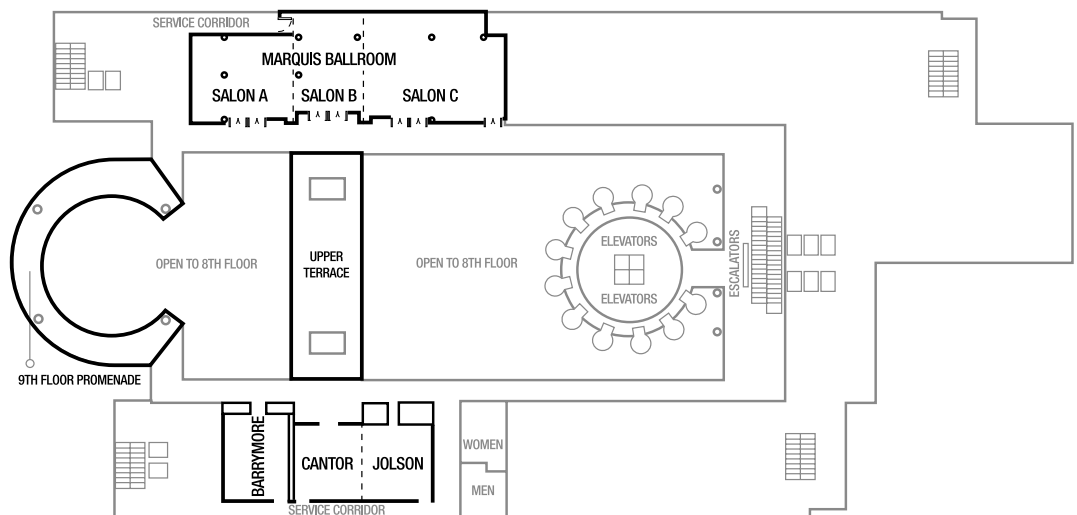
## Fourth Floor



## Seventh Floor



## Ninth Floor



**# EXHIBITOR**

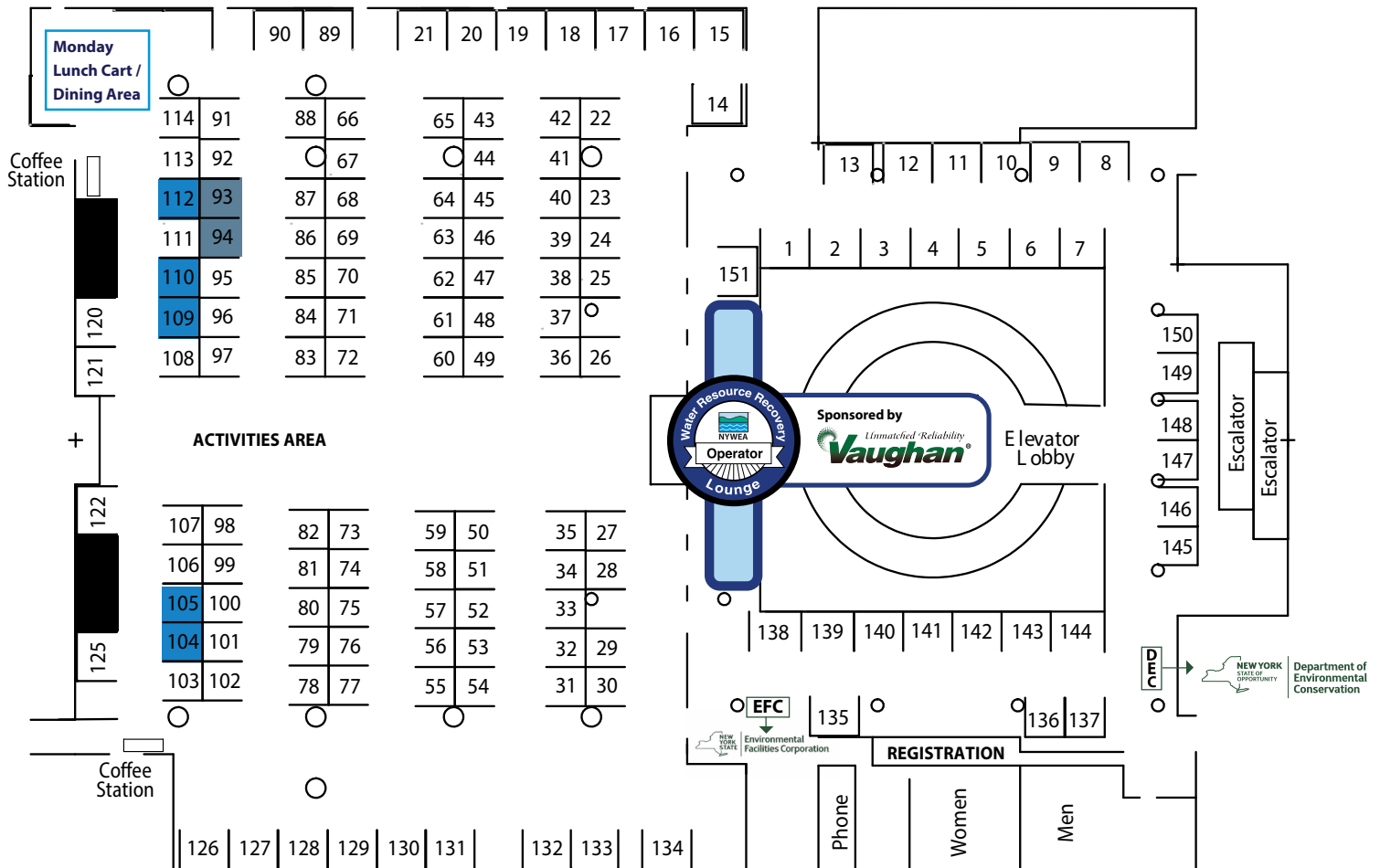
**60** Electro Scan Inc  
**27** Emerson  
**65** EMMONS Metro LLC  
**113** Envirolutions LLC  
**114** Envirolutions LLC  
**131** Fleet Pump & Service  
**101** Flottweg / Purafil  
**130** GA Fleet  
**138** Glasco UV  
**1** GP Jager / Aerzen / WSG & Solutions  
**9** GP Jager / Aqua Aerobic / Centrisys  
**144** GP Jager / Aquaturbo  
**8** GP Jager / Boerger  
**143** GP Jager / Charter Machine / SSI Aeration  
**5** GP Jager / Ebara - HG / Kurita America Inc.  
**10** GP Jager / Fairfield  
**11** GP Jager / Grundfos  
**7** GP Jager / JWC Environmental / De Nora  
**137** GP Jager / Netzsch / Nexom  
**4** GP Jager / Parkson / Nuvonic UV  
**136** GP Jager / Saveco  
**2** GP Jager / Veolia  
**13** GP Jager / Watson Marlow  
**12** GP Jager / World Water Works / Kusters  
**6** GP Jager / Xylem  
**3** GP Jager Inc.  
**34** Graybar Electric  
**62** Grignard Company  
**151** Hach Company  
**106** Hayes Pump Inc.  
**43** Hayward Flow Control  
**17** Hayward Gordon- Ebara  
**18** Huber Technologies  
**107** In-Situ  
**51** Invent Environmental Technologies, Inc.  
**79** ITT Gould's  
**20** JDV Equipment / Komax Mixing

**# EXHIBITOR**

**68** Kane-Davey Associates / Perry Fiberglass  
**61** Kemira Water Solutions, Inc.  
**98** Koester Associates  
**99** Koester Associates - Service  
**80** Koester Associates / AET / Andritz  
**58** Koester Associates / APG-Neuros / Biorem  
**59** Koester Associates / Continental Carbon / Crane Pumps  
**75** Koester Associates / Duperon / Ecoremedy  
**73** Koester Associates / Komax / Kubota  
**81** Koester Associates / Poly Processing  
**57** Koester Associates / Unison / Airvac  
**82** Koester Associates / Vaughan / Veolia  
**100** Koester Associates / Vogelsang  
**74** Koester Associates / Xylem / IFS  
**90** LaBella Associates, DPC  
**32** Lakeside  
**52** M.E. Simpson Co., Inc.  
**72** Mercer Rubber Co.  
**44** Metro NY Environmental LLC  
**69** Metro Valve & Actuation  
**70** Metro Valve & Actuation  
**40** Miller Energy, Inc.  
**50** MJ Engineering  
**53** Netzsch / PW Tech  
**64** North East Technical Sales  
**78** Nuove Energie / Amiad  
**14** NYWEA Met Chapter / Veolia Ultrafiltration  
**55** Oldcastle Precast  
**19** OVIVO Biosolids / Rexa Actuators  
**89** PCS Pump & Process  
**16** Penn Valley Pump / ECS Odor Control  
**120** Polydyne, Inc.  
**86** Process Equipment Sales and Service, Inc.  
**15** Protectolite / Next-Turbo  
**135** PSI Process  
**126** PumpCon  
**139** Pumping Services Inc.  
**140** Pumping Services Inc.

- # EXHIBITOR
- 141** Pumping Services Inc.
- 146** Quality Controls Inc
- 63** Rapid Pump & Meter Service Co.
- 22** Raritan Group
- 23** Raritan Valve & Automation
- 96** Reiner Pump Systems
- 134** Revere
- 85** Ross Valve
- 92** Schnabel Engineering
- 125** Sewer AI
- 88** Site Specific Design, Inc.
- 24** Spectraserv Inc.
- 71** StormTrap
- 111** Suozzo, Doty & Associates
- 25** Synagro Technologies, Inc. (EPIC)
- 103** Syracuse University
- 149** Tek-Sales, Inc.

- # EXHIBITOR
- 150** Tek-Sales, Inc.
- 87** Tetra Tech
- 54** Thermal Process Systems
- 30** Trident Actuators
- 133** Trillium / Wemco
- 76** Trojan Technologies
- 142** Tully Environmental Inc dba Clearbrook
- 83** USA Bluebook
- 102** Varec Biogas
- 66** VEGA Americas
- 121** Veolia
- 33** Victaulic
- 77** Viking Chain / Cordell Manufacturer
- 56** Westech
- 129** Xylem - Flygt
- 127** Xylem - Godwin
- 128** Xylem - Treatment (Sanitaire / Leopold)
- 122** Zoeller



# EXHIBIT HALL, 5TH FLOOR



# 2025 ANNUAL MEETING

## LONG STANDING MEMBERS

NYWEA celebrates the environmental professionals listed below who have dedicated their time, talents and attention to working on water quality.

### 20 Years

David Barnes  
 Ravi Basant  
 Phillip Campisi  
 Daniel Capano  
 Allen Deur  
 Jane Gajwani  
 Lawrence Greenberg  
 Eric Haslam  
 Michael Hershelman  
 Angela Horton  
 Christopher Kelly  
 Carl Lagasca  
 Gregory Levasseur  
 Jean Malafrente  
 Jeremy Meerdink  
 Peter Pesaresi  
 William Pfrang  
 Kevin Quinn  
 Michael Reichel  
 Pau Rush  
 Matthew Scheiner  
 David Snyder  
 John Story  
 Michael Walker  
 Lawrence Wang  
 Allen Winchell  
 Brian Wirta

### 30 Years

Edward Barboe  
 Samuel Case  
 Christopher Fry  
 Gregory Jager  
 Viktor Levin  
 Joseph Marturano  
 A. Scott McFarland  
 John Perriello  
 Michael Sandor

### 40 Years

Richard Cotugno  
 Frederick Di Riso  
 Steven Hearl  
 Theresa Heneveld  
 Alfonso Lopez  
 Michael Smith

### 50 Years

Francis Bridges  
 Steven Fangmann  
 Joseph Fioraliso  
 Libby Ford  
 Robert Kukenberger  
 Rengachari Srinivasaraghavan

### 60 Years

Henry Chlupsa  
 George Krupa  
 Jerry Lastihenos  
 Edwin Polese



ADVERTISER	PAGE
AECOM	16
Boomi Environmental	19
CSA Group	Back Cover
Dave Heiner Associates	9
D & B Engineers and Architects	7
Earth Repair, LLC	22
EDR	26
GA Fleet	8
GP Jager Inc.	32
IMEG	19
Koester Associates	Inside Front Cover, 29
Raritan Group	15
Raritan Valve & Automation	13
Synagro	56
Vaughan	17
Veolia	33
Wendel	14
Woodard & Curran	17
Wright-Pierce	17

**THANK YOU  
 FOR  
 ADVERTISING!**



# NYWEA Board of Directors and Committees



## BOARD OF DIRECTORS

### OFFICERS

**President** ..... Lisa Derrigan, Buffalo  
**President-Elect** ..... Daniel Rourke, Saratoga  
**Vice President** ..... Vjesh Karatt Vellatt, New York City  
**Vice President-Elect** ..... Dan O'Sullivan, Buffalo  
**Treasurer** ..... Timothy Taber, Liverpool  
**Assistant Treasurer** ..... Robert DeGiorgio, New York City  
**Immediate Past President** ..... Donna Grudier, Northport  
**Senior WEF House of Delegates Representative** ..... Rosaleen B. Nogle, Buffalo  
**Executive Director** ..... Khristopher Dodson, Syracuse

### WEF House of Delegates

Rosaleen B. Nogle, Buffalo; Vatche Minassian, New York City; .....  
 Gregory Shaw, Jr., Newburgh

**Operator Representative** ..... Howard Robinson, Queens  
**Young Professional** ..... Sara (Igielski) Sepulveres, New York City  
**NYSDEC Liaison** ..... Ed Hampston, Albany  
**USEPA Liaison** ..... Virginia Wong, New York City  
**NYSEFC Liaison** ..... William Brizzell, Albany

## CHAPTER REPRESENTATIVES

**Capital** ..... Neil O'Connor, Albany  
**Central** ..... Angel French, Watertown  
**Genesee** ..... Adam Cummings, North Chili  
**Long Island** ..... Chris Korzenko, Melville  
**Lower Hudson** ..... Matthew Oster, New York City  
**Metropolitan** ..... Gregory Shaw, Jr., Newburgh  
**Western** ..... Jacob Kocic, Buffalo

## COMMITTEE REPRESENTATIVES

**Association Activities Group** ..... William Nylic  
**Technical Group** ..... Dan O'Sullivan  
**Public Outreach Group** ..... Doug Daley

## EXECUTIVE OFFICE

**Executive Director** ..... Khristopher Dodson  
**Executive Assistant** ..... Margaret "Maggie" Hoose  
**Operator Certification Administrator** ..... Carolyn Steinhauer  
**Communications Manager** ..... Christopher Boyle  
**Program Manager and Communications Specialist** ..... Margaret "Maggie" Simpson

## COMMITTEES

### ASSOCIATION ACTIVITIES GROUP – William Nylic

**Awards** ..... Jacob Kocic  
**DE&I** ..... Walter Walker, Michelle Hess  
**Membership Program** ..... Eric Moody  
**Certification Committee** ..... Vincent Rubino, Alex Emmerson, Eric Cushing, Tyler Masick  
**Conference Management** ..... William J. Nylic III  
**Strategic Planning** ..... Daniel Rourke  
**Young Professionals** ..... Noelle Sawicki

### TECHNICAL GROUP – Kevin Hickey

**Asset Management** ..... Dan Capano  
**Energy/Research** ..... Vacant  
**Environmental Science** ..... Edmund Lee  
**Industrial Wastewater/Pretreatment** ..... Kevin Hickey  
**Residuals & Biosolids** ..... Jeffrey LeBlanc  
**Stormwater** ..... David Stahl  
**Utility Executives** ..... Joseph L. Fiegl  
**Utility Operations and Maintenance** ..... Sean Morrison  
**Wastewater Collection Systems Watershed** ..... Richard Loeffler  
 Lisa Melville

### PUBLIC OUTREACH GROUP – Doug Daley

**Government Affairs** ..... Robert Ostapczuk  
**Humanitarian Assistance** ..... Vacant  
**Member Education** ..... Michael Lannon  
**Public Outreach** ..... Chris Korzenko  
**Publications** ..... Doug Daley, Danielle Hurley  
**Scholarship** ..... Alfonso Lopez, Diane Hammerman  
**Student/University** ..... Jessica Wilson  
**Sustainability** ..... Dennis Stanford

## COUNCILS AND AFFILIATED BOARDS

**Collections Certification Board** ..... Richard Loeffler  
**Operator Certification Council** ..... Meredith Streeter, Chair  
 Khristopher Dodson, Vice Chair

## TASK FORCES

**Business Plan** ..... Lisa Derrigan  
**Civil Service** ..... Tim Murphy  
**Future Conferences** ..... Lisa Derrigan, Alex Bullers  
**Conference Managers** ..... William Nylic, Larry Brincat, Robert DeGiorgio, Lisa Derrigan, Khristopher Dodson, William Grandner, Maggie Hoose, Maureen Kozol, Lauren Livermore, Joe Massaro, Shay Owrang, Michaela Regner, Howard Robinson, Tim Taber, Vjesh Karatt Vellatt, Jamie Johnson

## PROGRAM COMMITTEE

Kathryn Serra, *Chair*  
 Amie Lenkowiec, *Vice-Chair*  
 Sara Urbanczyk, *Incoming Vice-Chair*  
 David Barnes  
 Dan Capano  
 Scott Davis  
 Lisa Derrigan  
 Khristopher Dodson  
 Jennifer Franco  
 Robert Frost  
 Magdalena Gasior  
 Vera Gouchev  
 Craig Hurteau  
 Camie Jarrell  
 Jamie Johnson  
 Vjesh Karatt Vellatt  
 Michael Kessler  
 Frederick Kincheloe  
 Jeffrey LeBlanc  
 Lauren Livermore  
 Matthew Manchisi  
 Michael Manning  
 Paul McGarvey  
 Katie McGuire  
 Vatche Minassian  
 Katie Mockler  
 Erin Moore  
 Nadia Mugisha  
 Matthew Oster  
 Randy Ott  
 Joseph Polomene  
 John Petito  
 Richard Pope  
 Tania Quesada  
 David Railsback  
 Vincent Rubino  
 Jonathan Ruff  
 Robert R. Sharp  
 Gregg Shaw  
 Toby Singer  
 Brian Skidmore  
 David Stahl  
 Dennis J. Stanford  
 Nancy Struzenski  
 Dahlia Thompson  
 Sara Urbanczyk  
 Kristin Wilkinson



**CSAGROUP**  
EST • 1956



## A FULL-SERVICE PROJECT DELIVERY & PROGRAM MANAGEMENT COMPANY



### SERVICES

- INTEGRATED WATER MANAGEMENT
- DRINKING WATER / WASTEWATER / WATER RESOURCES
- SUSTAINABILITY AND RESILIENCE
- CONSTRUCTION MANAGEMENT & SPECIAL INSPECTIONS
- DAMS / RESERVOIRS
- EMERGENCY MANAGEMENT
- ENGINEERING DESIGN
- ARCHITECTURE DESIGN
- ENVIRONMENTAL STUDIES & PERMITTING